

### 3. Disassembly Diagram

**Step 1: Unloosen the tenon to take out Guide Paper Output/Output Tray**



**Step 2: Unscrew the joint to remove Cover Rear**



**Step 3: Unscrew the joint to remove Input Tray**



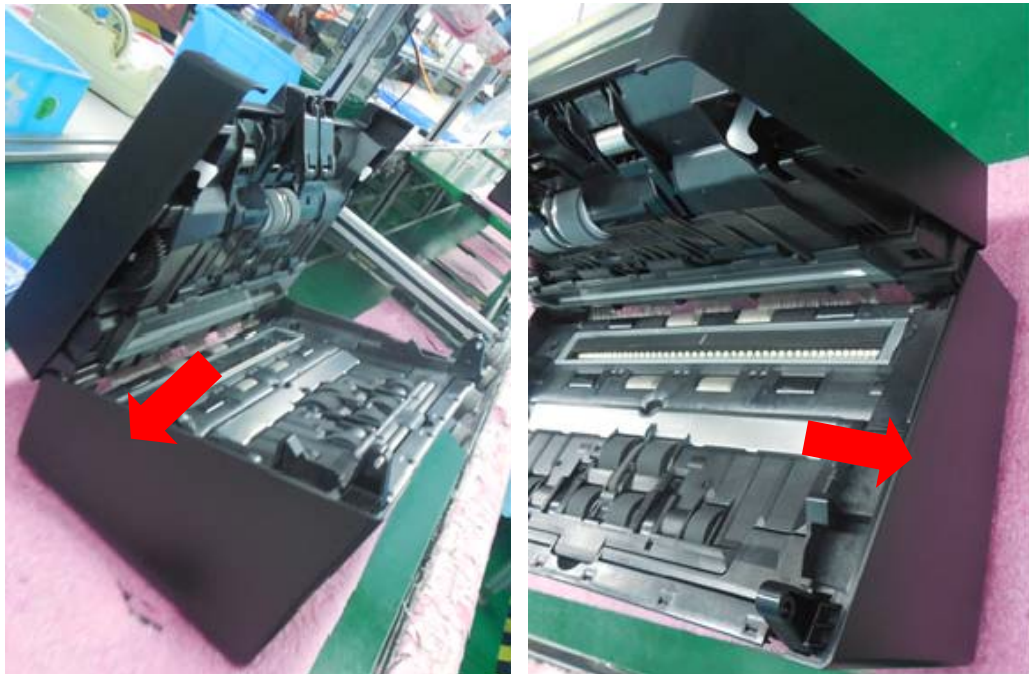
**Step 4: Unloosen the tenon to remove Cover Top/Wire**



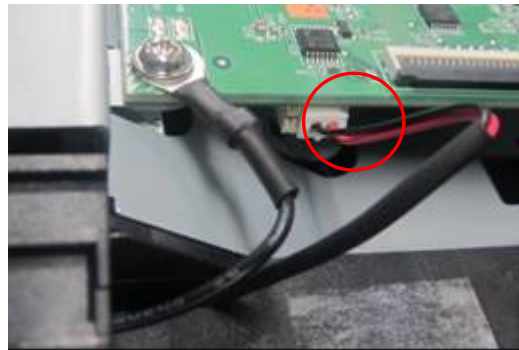
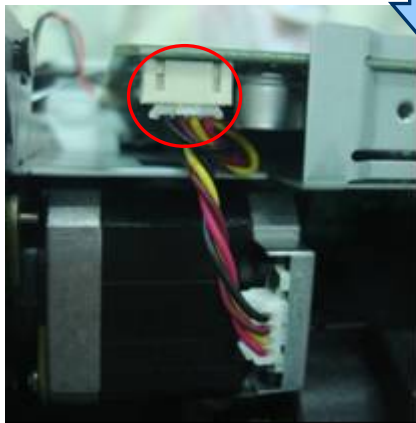
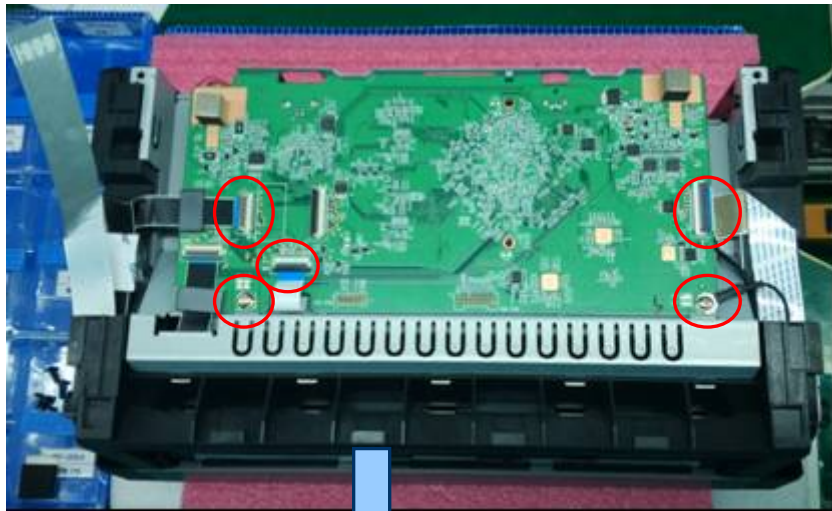
**Step 5: Unscrew the joint and take Metal Cover out**



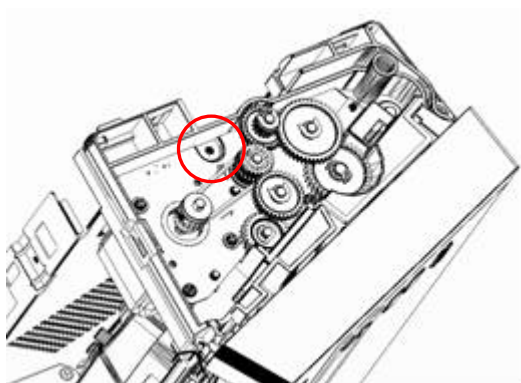
**Step 6: Unloosen the tenon to remove Cover L/Cover R**



**Step 7: Unscrew (cross\*2)/ unplug the joint to take out PCBA**



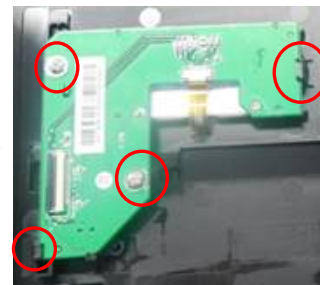
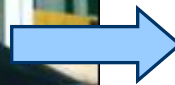
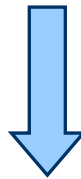
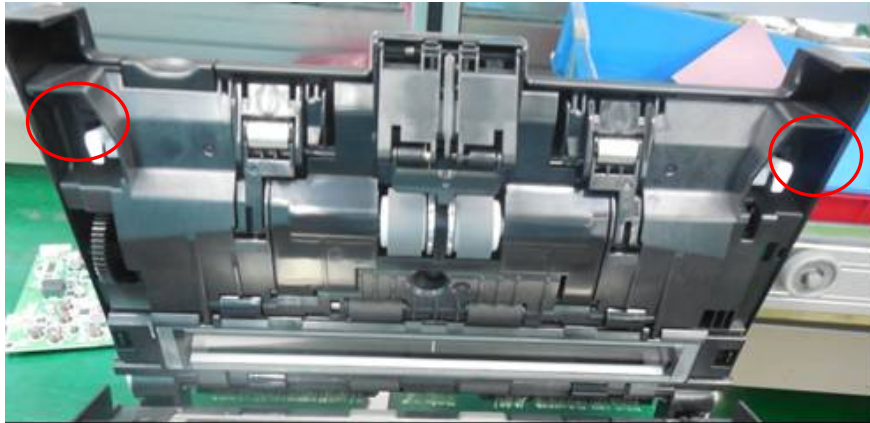
**Step 8: Unscrew (Cross\*1) the joint and pick out the Bush**



**Step 9: Unloosen tenon to remove Metal Case**

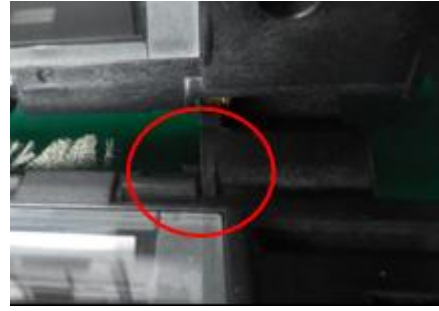
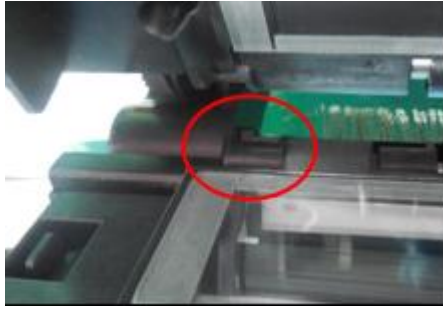


**Step 10: Unscrew (Cross\*2) the joint / unplug the joint of cable to take Cover Panel out, then unloosen/unscrew the joint to remove PCBA/Button**



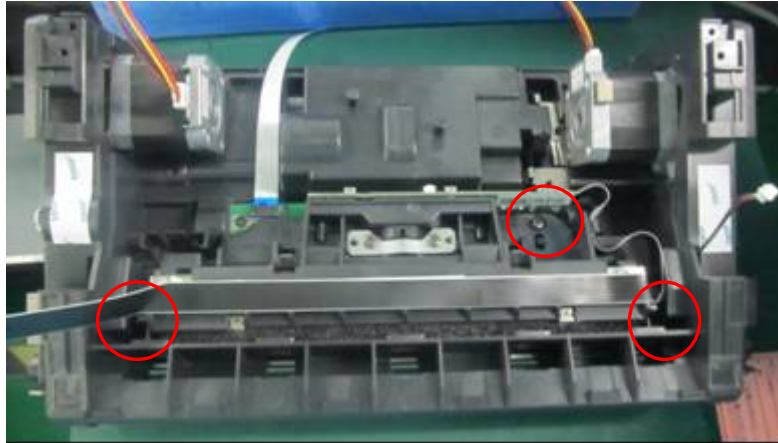


**Step 11: Unloosen the tenon to separate Upper Base Accessory and Lower Base Accessory**

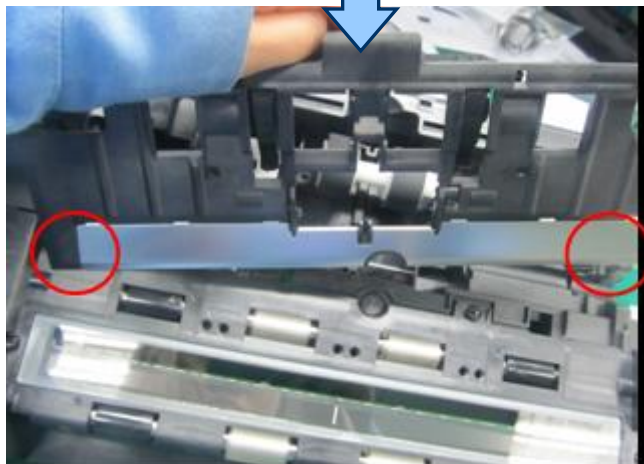


## Lower Base Accessory

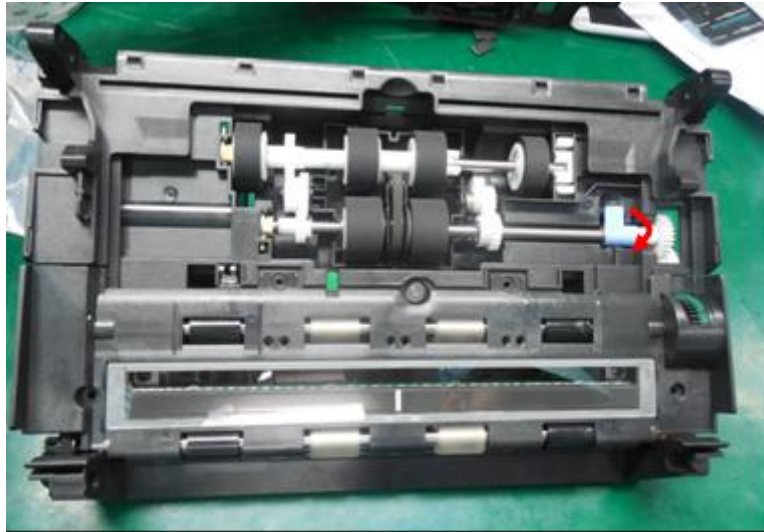
**Step 1 : Unscrew(Cross\*1) the joint/unloosen the tenon to remove Optical Accessory**



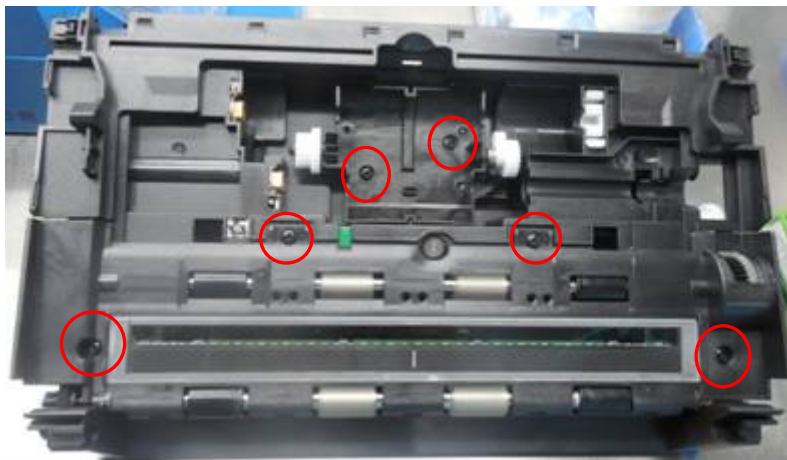
**Step 2 : Open the Paper Guide, then unloosen the tenon**



**Step 3 : Open the blue Clamp to take out Pick up Roller/ADF Roller**



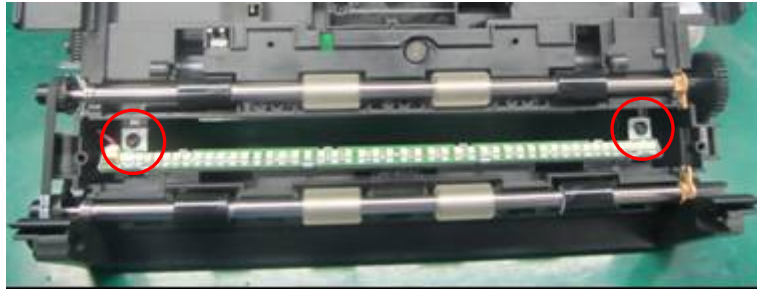
**Step 4 : Unscrew(Cross\*4) the joint to remove Glass Holder/ADF Pickup Holder**



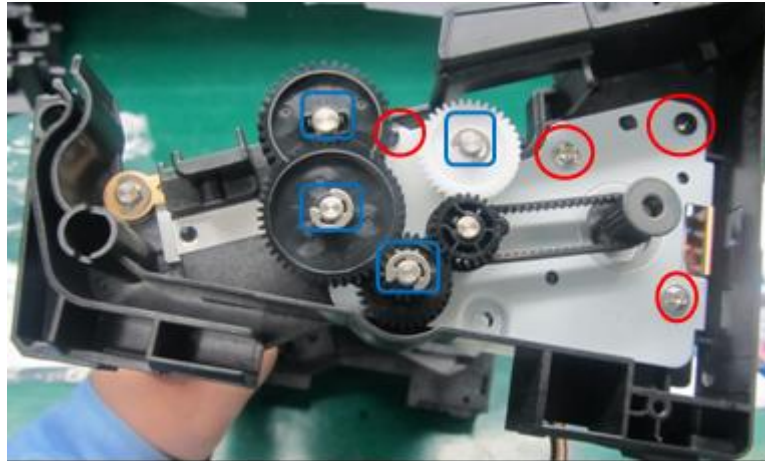
**Step 5: Unloosen the tenon to remove Gear/Spring from Shaft Mount**



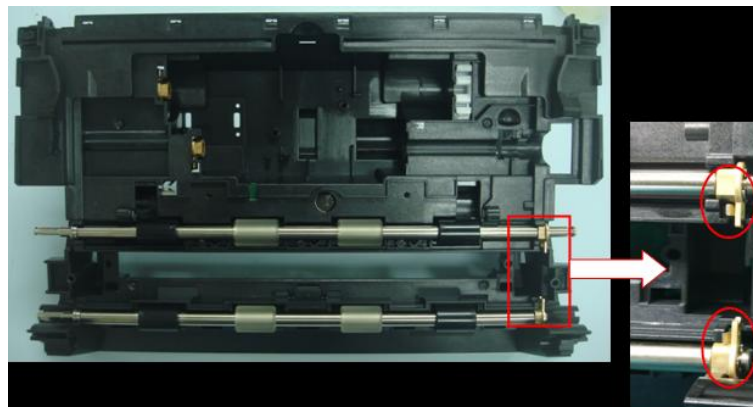
**Step 6: Unscrew(Cross\*2) the joint to remove LED Light Bar**



**Step 7: Remove E-Ring to loosen gear then unscrew the joint (Cross\*4) to remove motor**

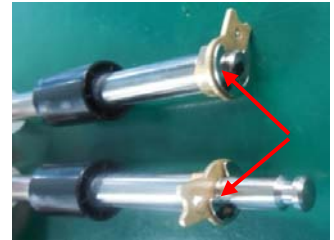
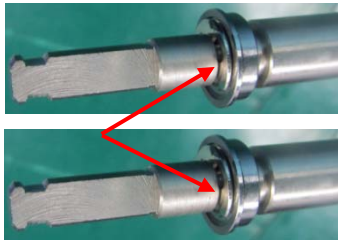
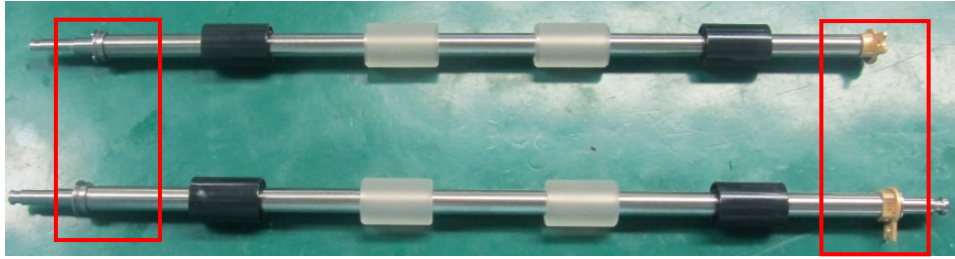


**Step 8: Unloosen the tenon / remove the E-Ring to remove Roller**

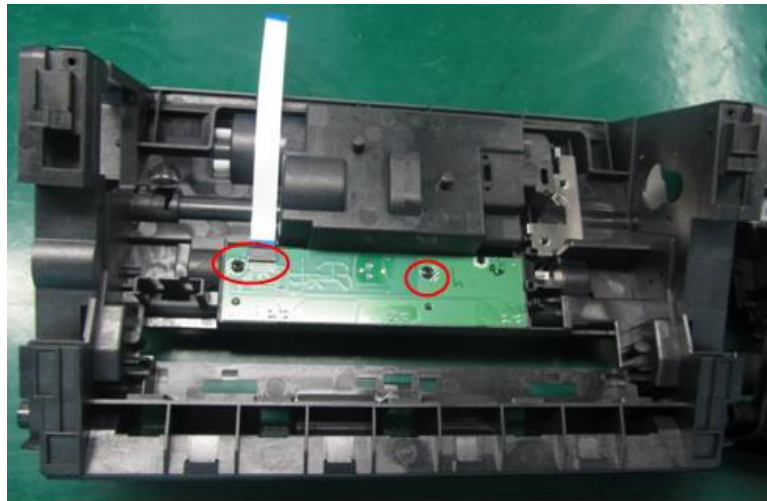




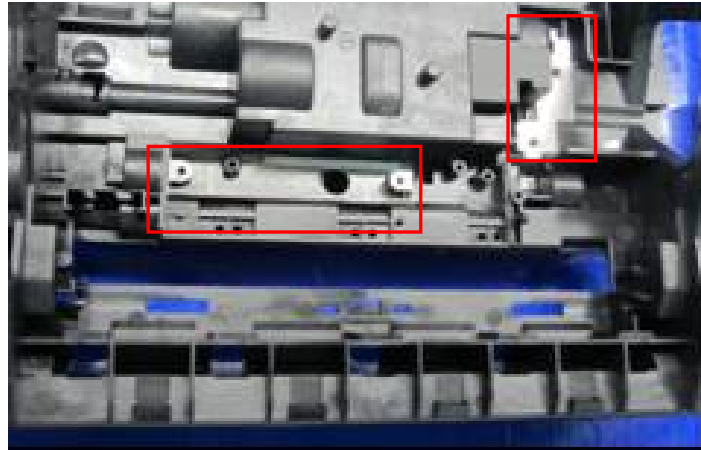
**Step 9: Remove E-Ring to take Bearing out, then cut down the rubber from roller**



**Step 10: Unscrew/unplug the joint to remove PCBA and Cable**

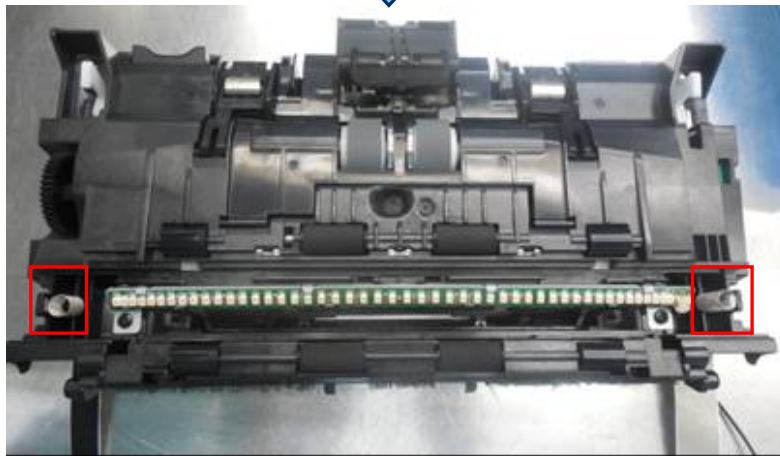
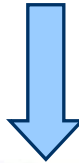
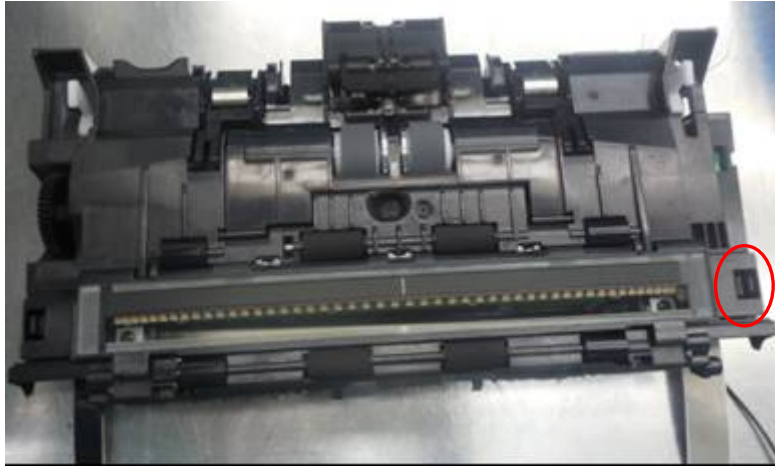


**Step 11: Unloosen the tenon to remove Plate**



## Upper Base Accessory

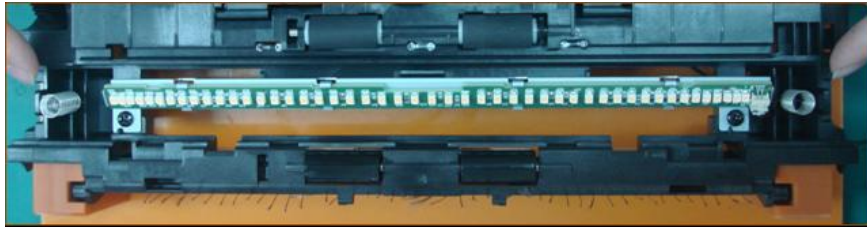
**Step 1: Unloosen the tenon to remove Glass Holder, then take out Spring**



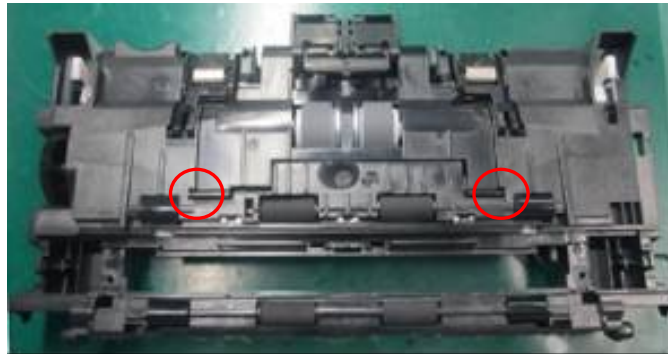
**Step 2: Unscrew(Cross\*1) the joint to remove Optical Accessory**



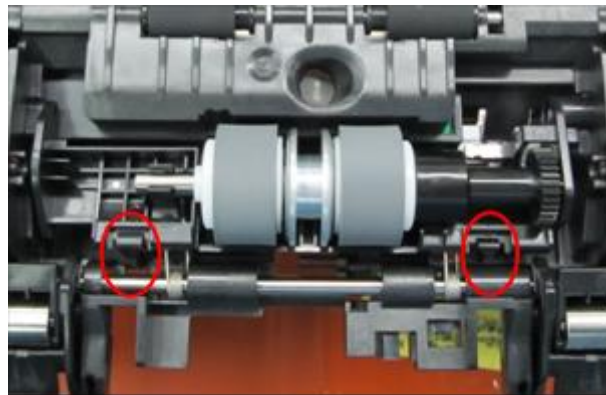
**Step 3: Unscrew(Cross\*2) the joint to remove LED Light Bar**



**Step 4: Unloosen the tenon to remove Cover Paper Roller**



**Step 5: Unloosen spring/the tenon to remove Reverse Roller**

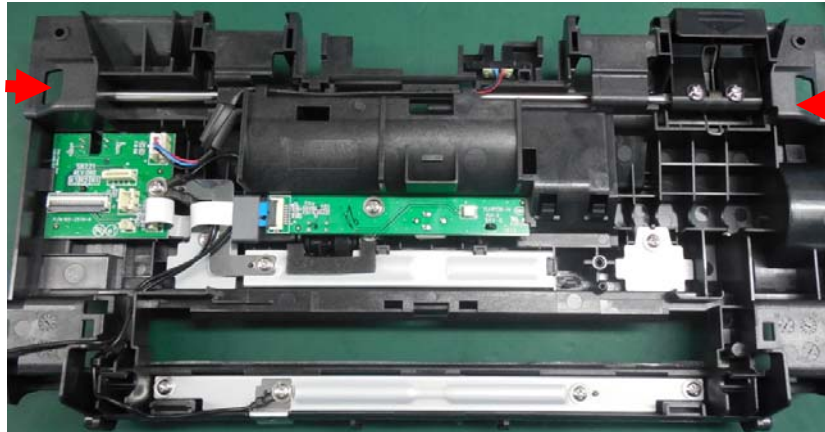


**Step 6: Unloosen the tenon to separate Gear/Washer/Torque Limit/Spur Gear/Washer**

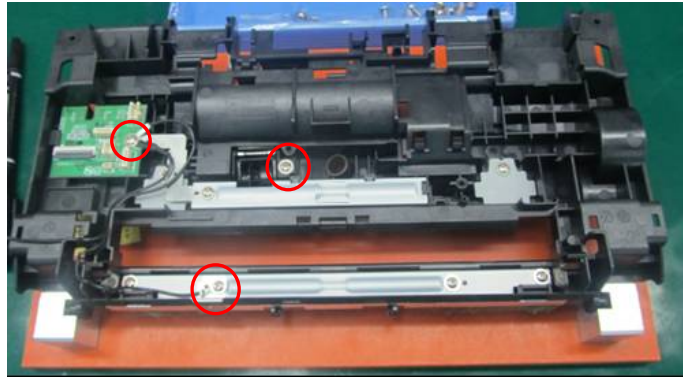




**Step 7: Unloosen the tenon and unscrew the joint to take out Roller**



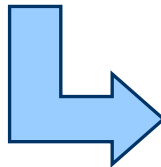
**Step 8: Unscrew(Cross\*3) the joint to remove cables/Jam Sensor**



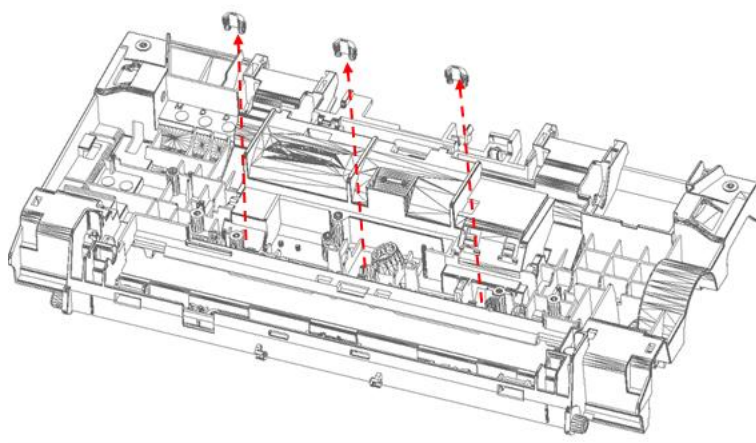
**Step 9: Unscrew(Cross\*1) the joint to remove Plate, then loosen to remove PCBA**



**Step 10: Unscrew(Cross\*5) the joint to remove Idle Roller/Spring**



### Step 11: Take out the LED Light Bar



# Optical Accessory

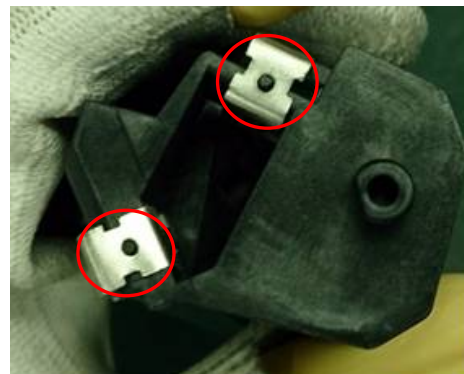
**Step 1: Unscrew(Cross\*2) the joint to remove PCBA**



**Step 2: Unscrew(Cross\*2) the joint to remove Lens**



**Step 3: Unloosen the tenon to remove mirror**

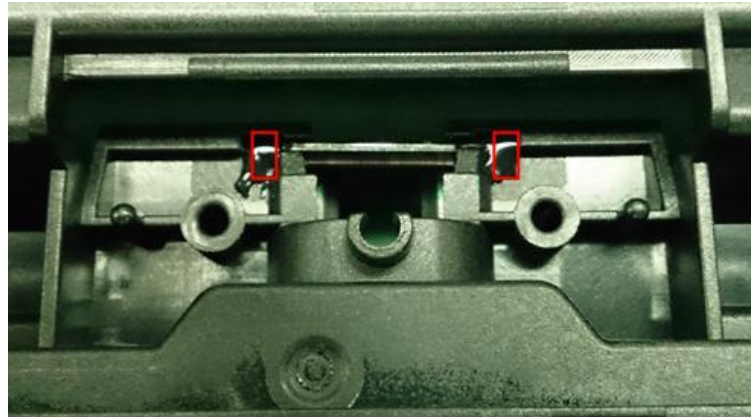




**Step 4: Unloosen the tenon to remove Mirror**



**Step 5: Remove the black glue to take Glass out**



## 4. Disassembly Tool

(1)



**Screwdriver**

(2)



**Screwdriver**

(3)



**Blade**

(4)



**Pliers**

## 8. WEEE ANNEX II

No.	Name	Qty.	Weight (g)	Annex II Materials
1	LED light bar, PCBA	2	44.26	Printed circuit board is greater than 10 square centimeters
2	PCBA	1	9.63	Printed circuit board is greater than 10 square centimeters
3	PCBA	1	7.7	Printed circuit board is greater than 10 square centimeters
4	PCBA	1	126.15	Printed circuit board is greater than 10 square centimeters
5	PCBA	1	29.30	Printed circuit board is greater than 10 square centimeters
6	PCBA	2	26.4	Printed circuit board is greater than 10 square centimeters
7	PCBA	1	20.9	Printed circuit board is greater than 10 square centimeters