

3. Disassembly Diagram

Step 1: Unloosen the tenon to take out Guide Paper Output/Output Tray



Step 2: Unscrew the joint to remove Cover Rear



Step 3: Unscrew the joint to remove Input Tray



Step 4: Unloosen the tenon to remove Cover Top/Wire



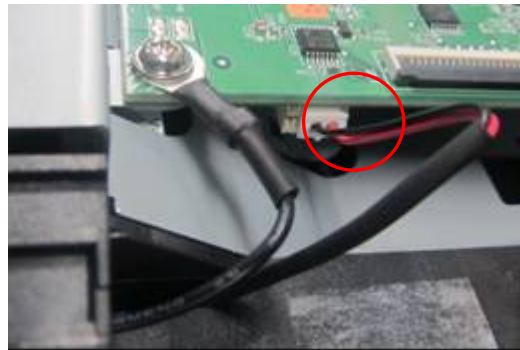
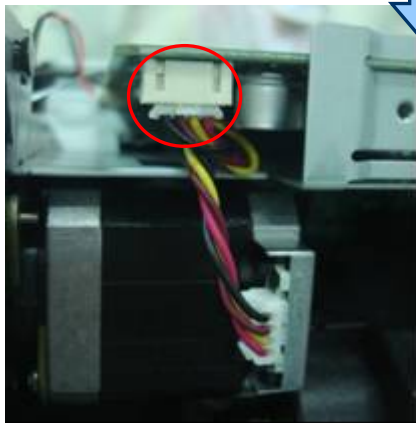
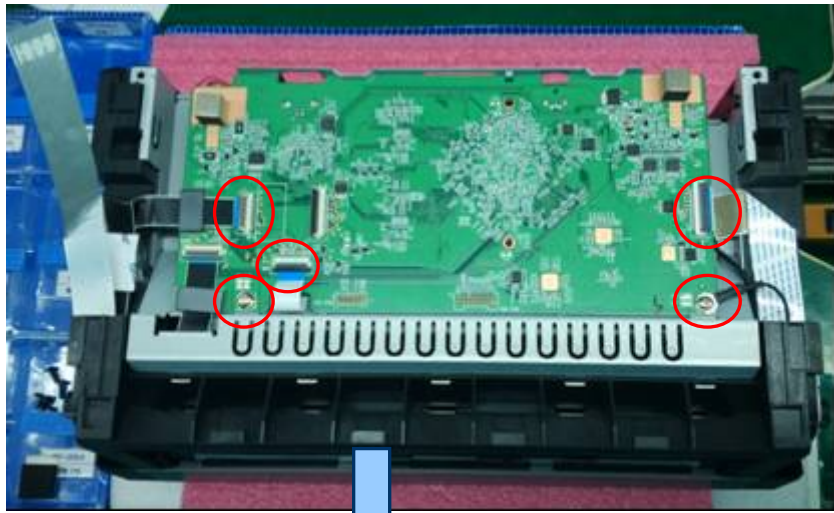
Step 5: Unscrew the joint and take Metal Cover out



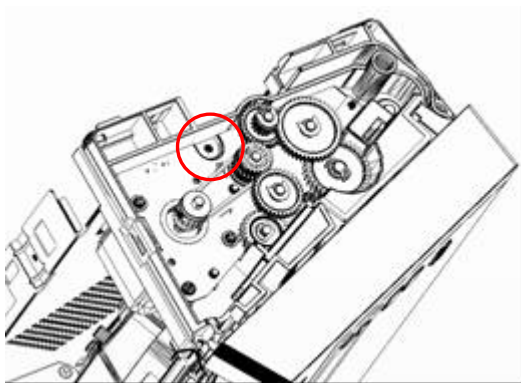
Step 6: Unloosen the tenon to remove Cover L/Cover R



Step 7: Unscrew (cross*2)/ unplug the joint to take out PCBA



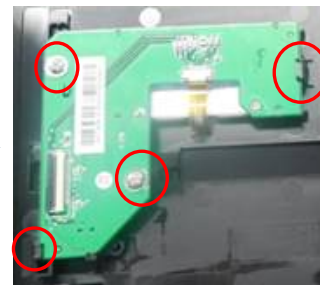
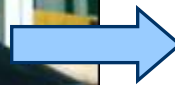
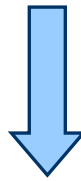
Step 8: Unscrew (Cross*1) the joint and pick out the Bush



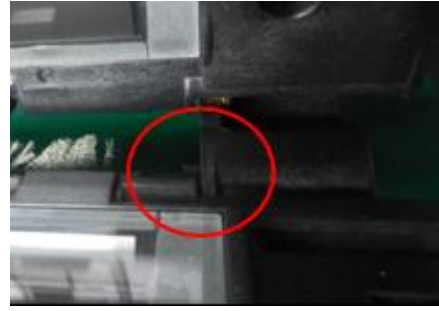
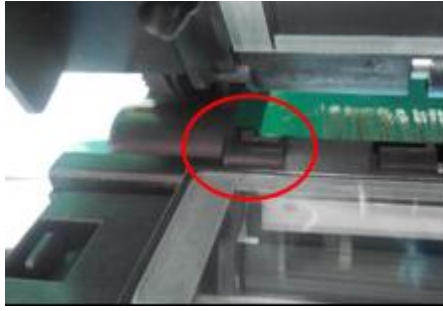
Step 9: Unloosen tenon to remove Metal Case



Step 10: Unscrew (Cross*2) the joint / unplug the joint of cable to take Cover Panel out, then unloosen/unscrew the joint to remove PCBA/Button

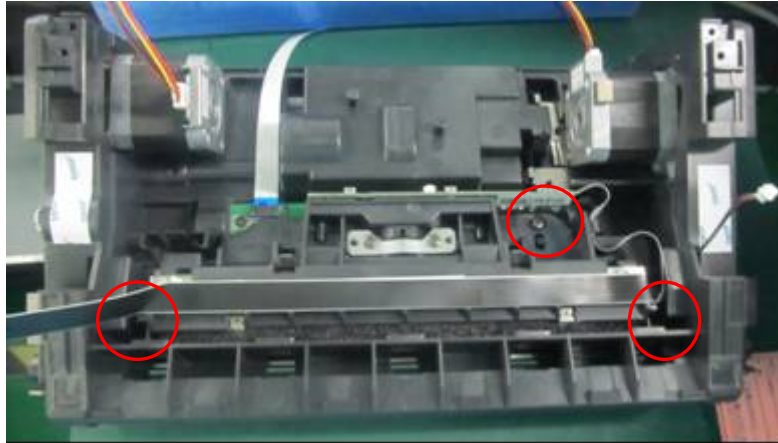


Step 11: Unloosen the tenon to separate Upper Base Accessory and Lower Base Accessory

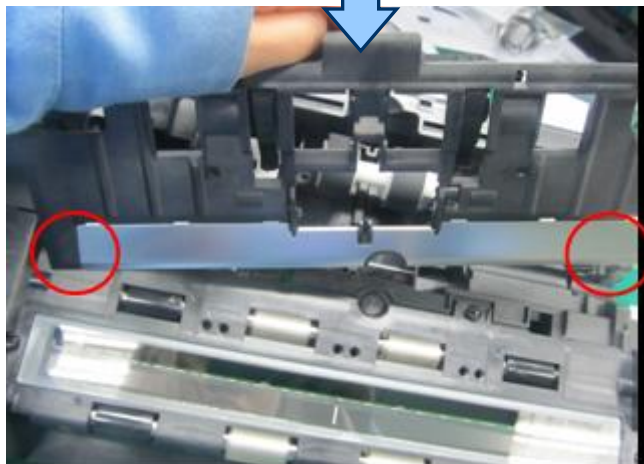


Lower Base Accessory

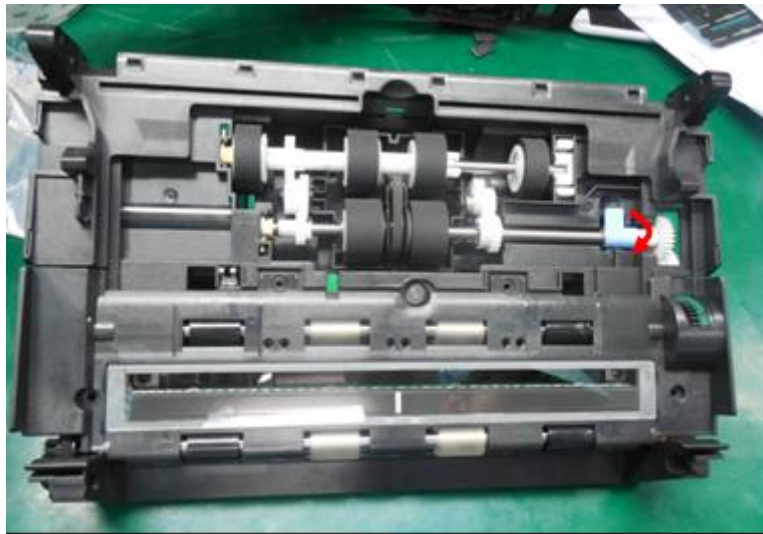
Step 1 : Unscrew(Cross*1) the joint/unloosen the tenon to remove Optical Accessory



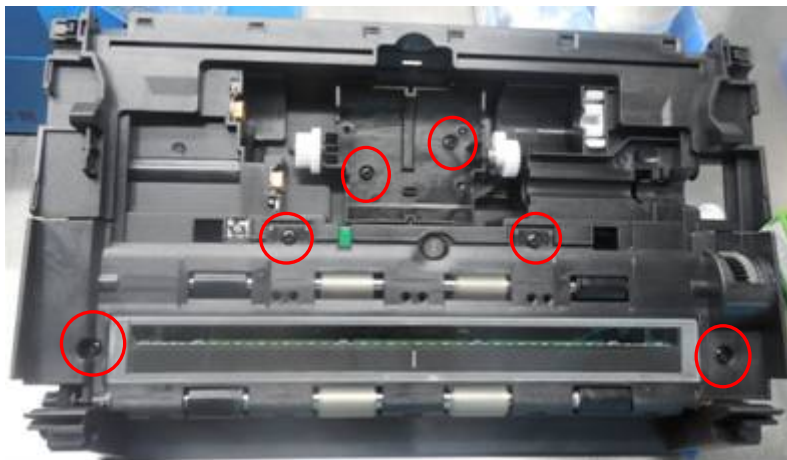
Step 2 : Open the Paper Guide, then unloosen the tenon



Step 3 : Open the blue Clamp to take out Pick up Roller/ADF Roller



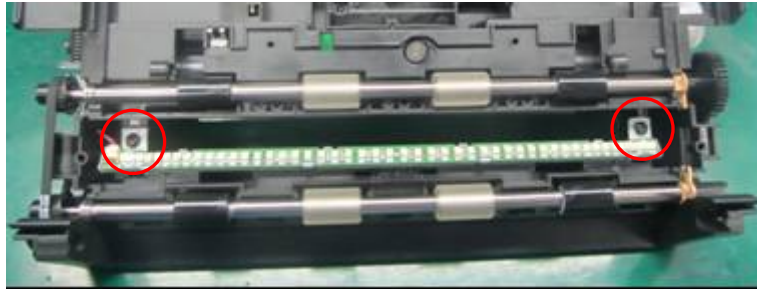
Step 4 : Unscrew(Cross*4) the joint to remove Glass Holder/ADF Pickup Holder



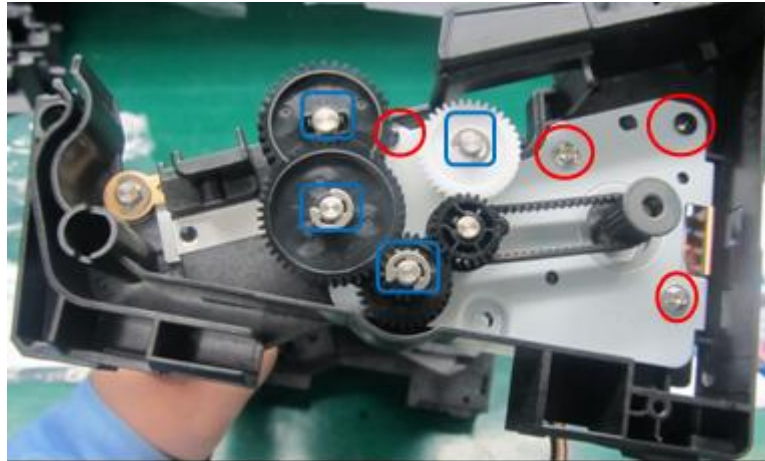
Step 5: Unloosen the tenon to remove Gear/Spring from Shaft Mount



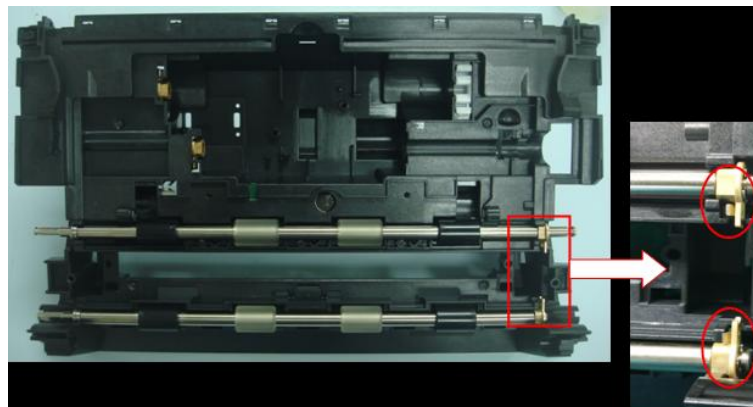
Step 6: Unscrew(Cross*2) the joint to remove LED Light Bar



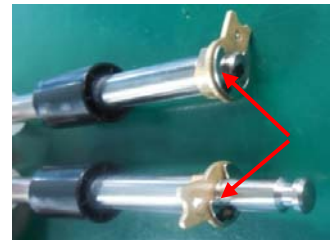
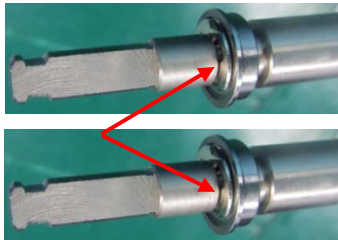
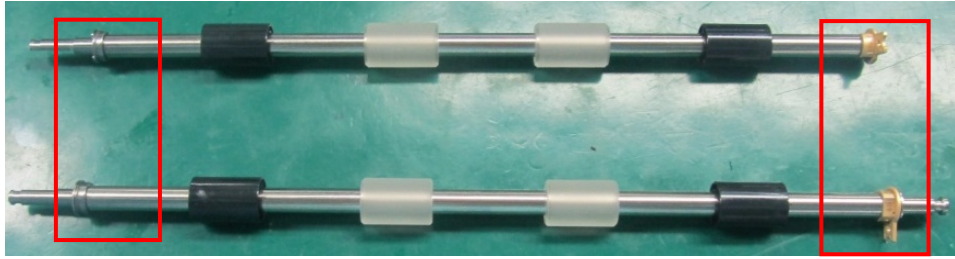
Step 7: Remove E-Ring to loosen gear then unscrew the joint (Cross*4) to remove motor



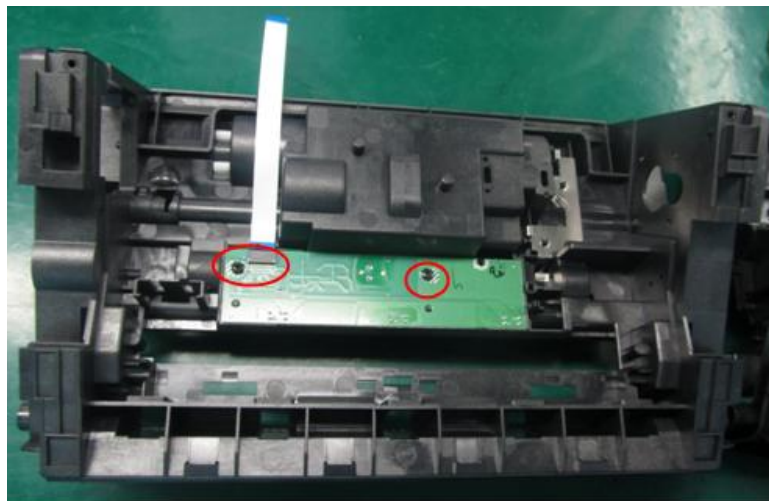
Step 8: Unloosen the tenon / remove the E-Ring to remove Roller



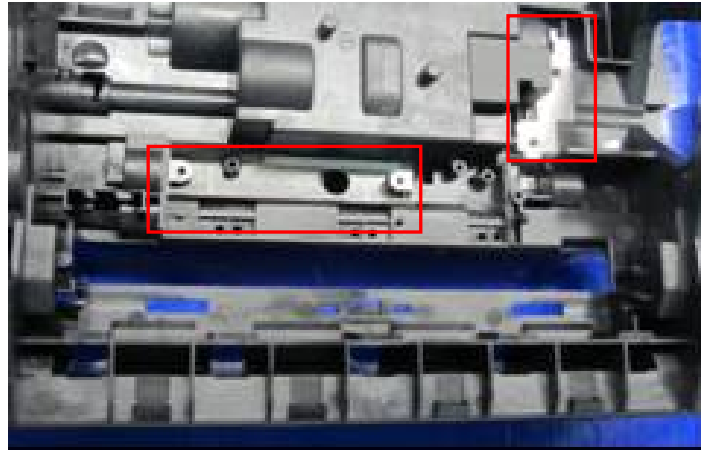
Step 9: Remove E-Ring to take Bearing out, then cut down the rubber from roller



Step 10: Unscrew/unplug the joint to remove PCBA and Cable

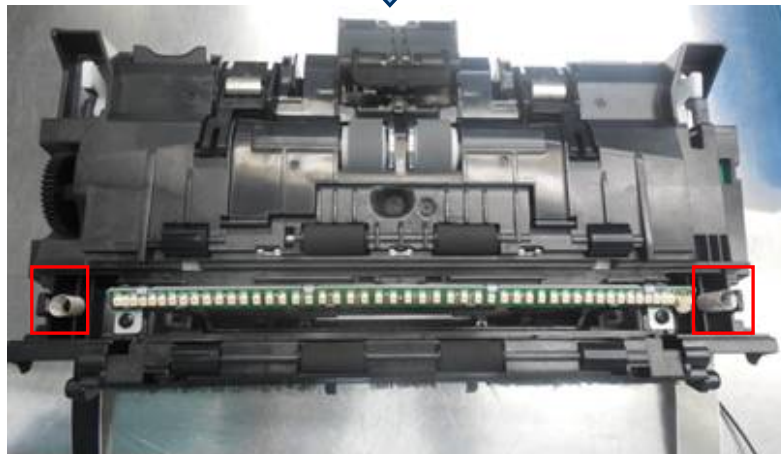
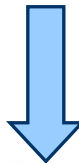
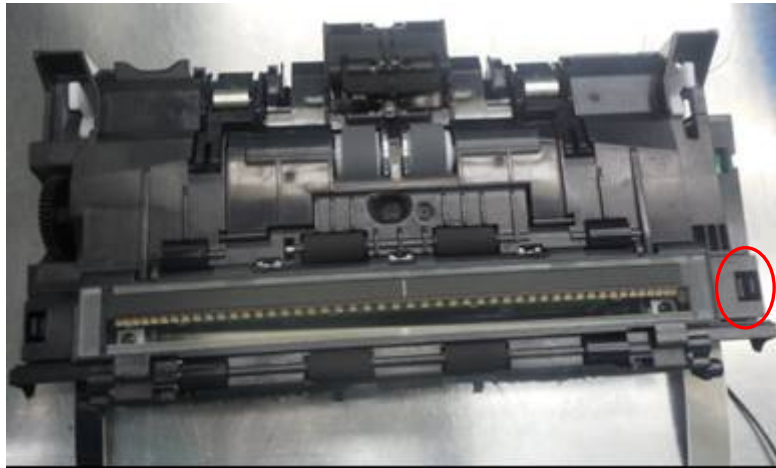


Step 11: Unloosen the tenon to remove Plate

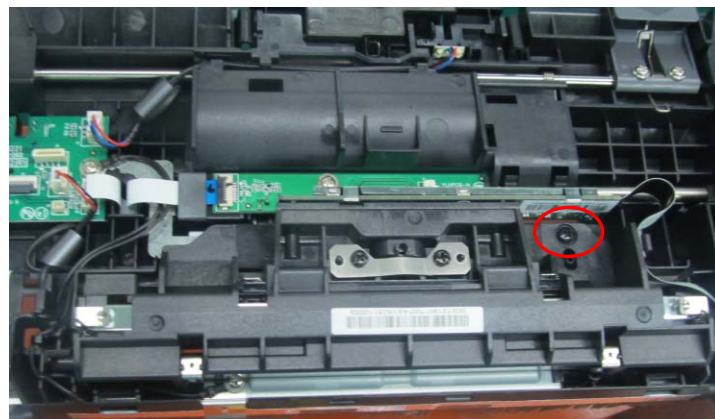


Upper Base Accessory

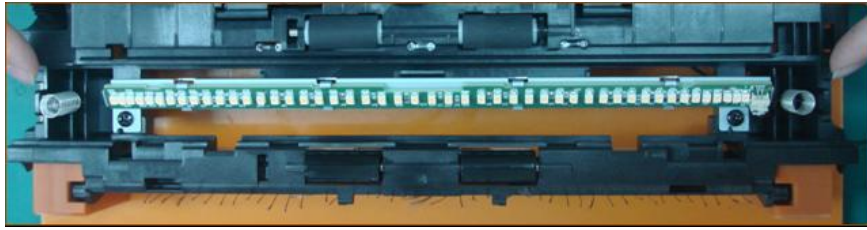
Step 1: Unloosen the tenon to remove Glass Holder, then take out Spring



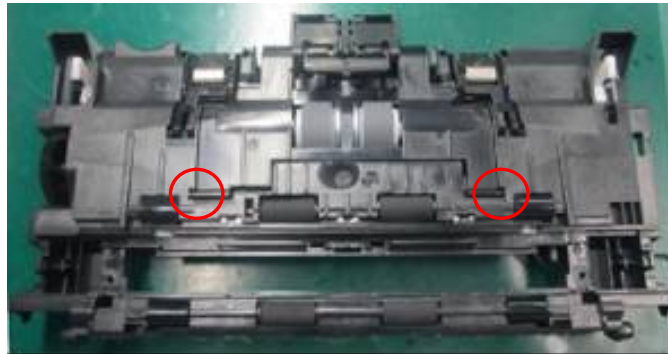
Step 2: Unscrew(Cross*1) the joint to remove Optical Accessory



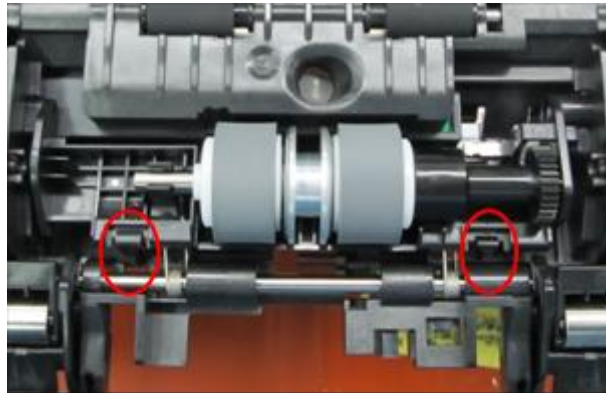
Step 3: Unscrew(Cross*2) the joint to remove LED Light Bar



Step 4: Unloosen the tenon to remove Cover Paper Roller



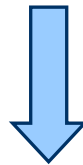
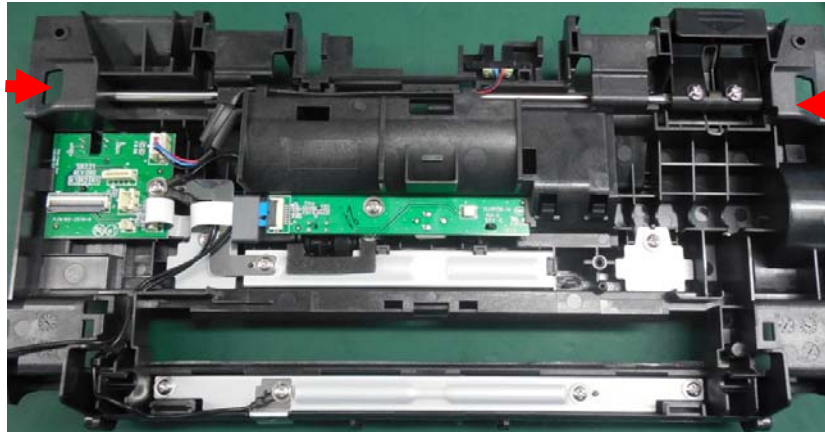
Step 5: Unloosen spring/the tenon to remove Reverse Roller



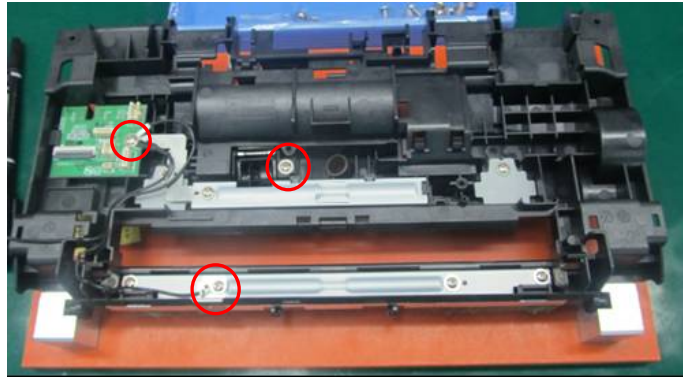
Step 6: Unloosen the tenon to separate Gear/Washer/Torque Limit/Spur Gear/Washer



Step 7: Unloosen the tenon and unscrew the joint to take out Roller



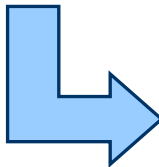
Step 8: Unscrew(Cross*3) the joint to remove cables/Jam Sensor



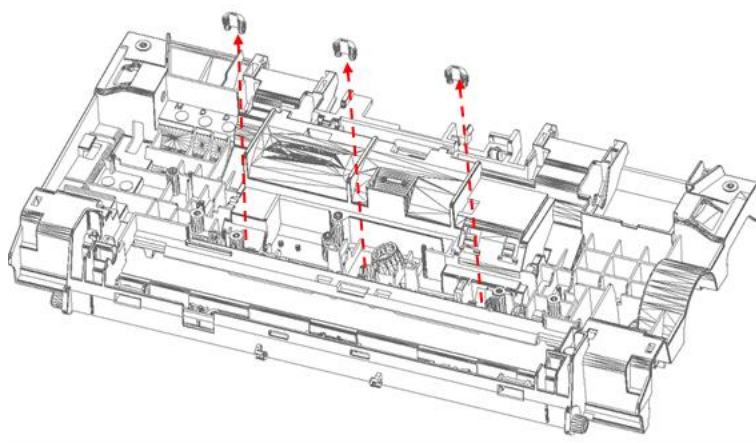
Step 9: Unscrew(Cross*1) the joint to remove Plate, then loosen to remove PCBA



Step 10: Unscrew(Cross*5) the joint to remove Idle Roller/Spring

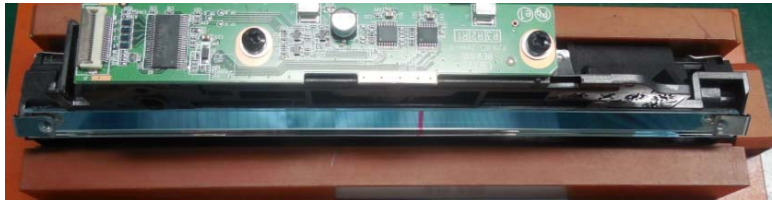


Step 11: Take out the LED Light Bar



Optical Accessory

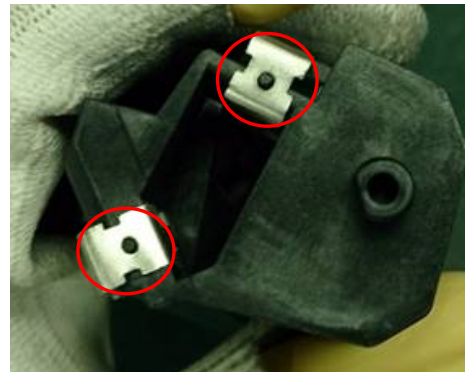
Step 1: Unscrew(Cross*2) the joint to remove PCBA



Step 2: Unscrew(Cross*2) the joint to remove Lens



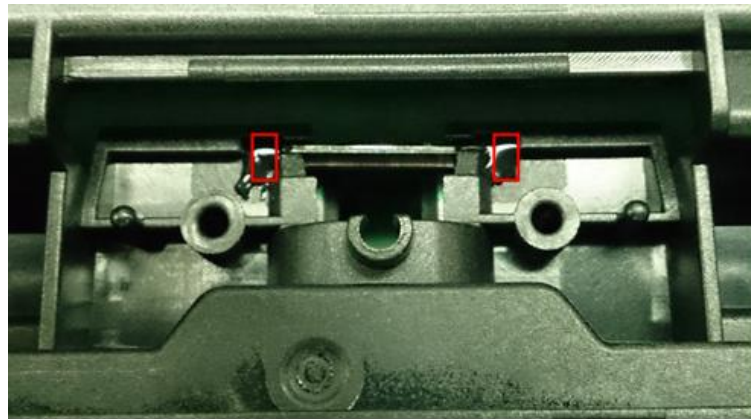
Step 3: Unloosen the tenon to remove mirror



Step 4: Unloosen the tenon to remove Mirror



Step 5: Remove the black glue to take Glass out



4. Disassembly Tool

(1)



Screwdriver

(2)



Screwdriver

(3)



Blade

(4)



Pliers

8. WEEE ANNEX II

No.	Name	Qty.	Weight (g)	Annex II Materials
1	LED light bar, PCBA	2	44.26	Printed circuit board is greater than 10 square centimeters
2	PCBA	1	9.63	Printed circuit board is greater than 10 square centimeters
3	PCBA	1	7.7	Printed circuit board is greater than 10 square centimeters
4	PCBA	1	126.15	Printed circuit board is greater than 10 square centimeters
5	PCBA	1	29.30	Printed circuit board is greater than 10 square centimeters
6	PCBA	2	26.4	Printed circuit board is greater than 10 square centimeters
7	PCBA	1	20.9	Printed circuit board is greater than 10 square centimeters