

3. Dismantling Process

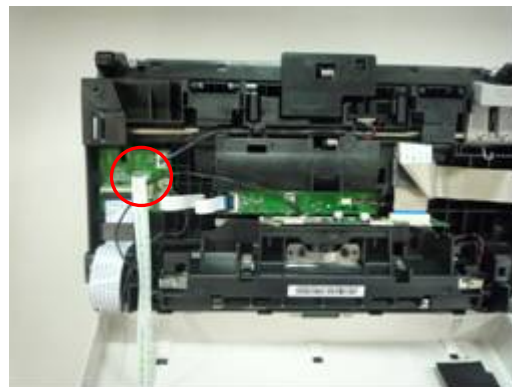
Separate 1 : Unloosen the tenon and remove Input Tray



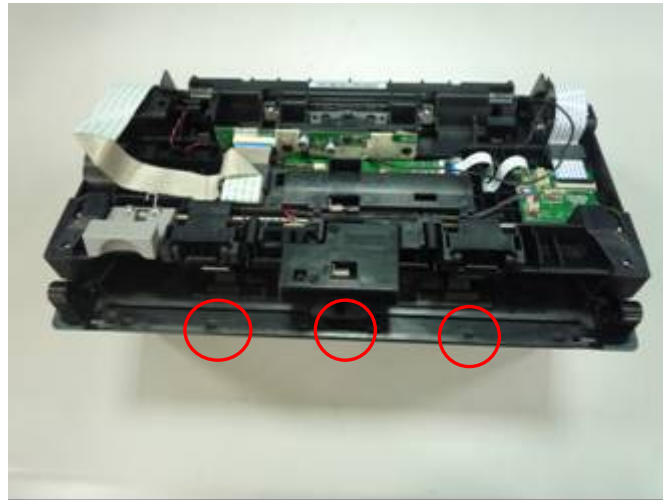
Separate 2 : Take out the Output Tray as below picture shown



Separate 3 : Unloosen the tenon and unplug the cable as below pictures shown



Separate 4 : Unloosen the tenon as below picture shown



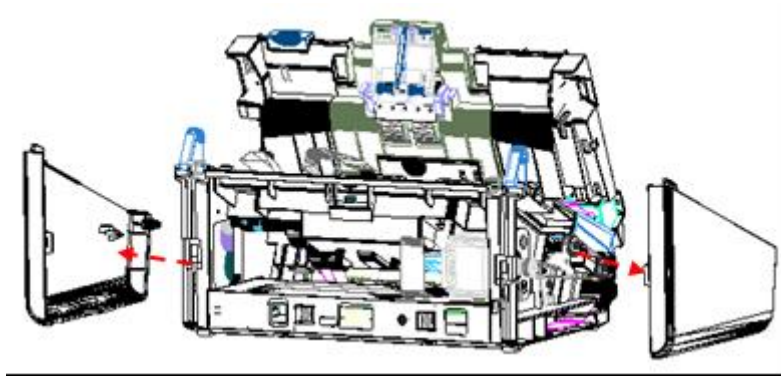
Separate 5 : Unscrew(Cross*2) all the joints to take out the part



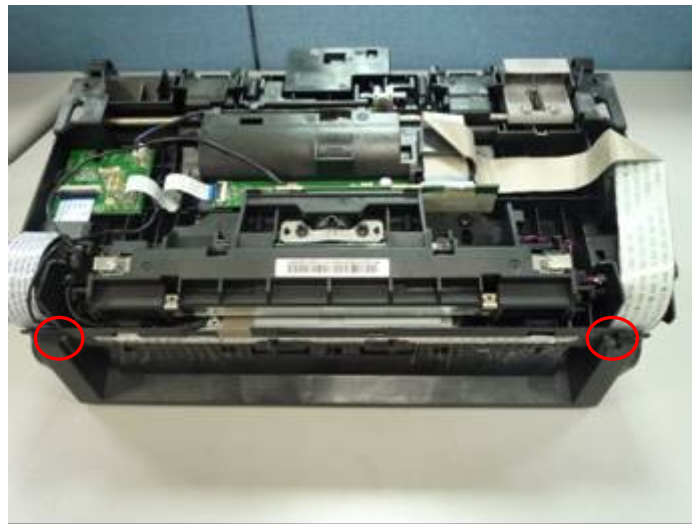
Separate 6 : Unscrew(Cross*2) all the joints to separate bottom base



Separate 7 : Unloosen the tenon and remove Cover R & Cover L

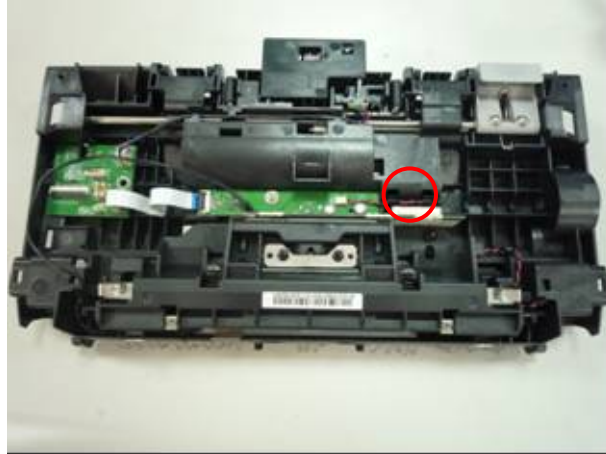


Separate 8 : Unloosen the tenon to separate Bottom Base Ass'y and Upper Base Ass'y

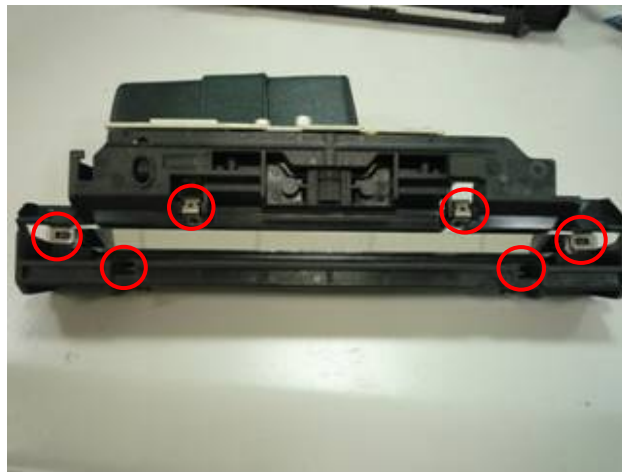


Main Body – Upper Base Ass'y

Separate 1 : Unscrew(Cross*1) the joint as below picture shown



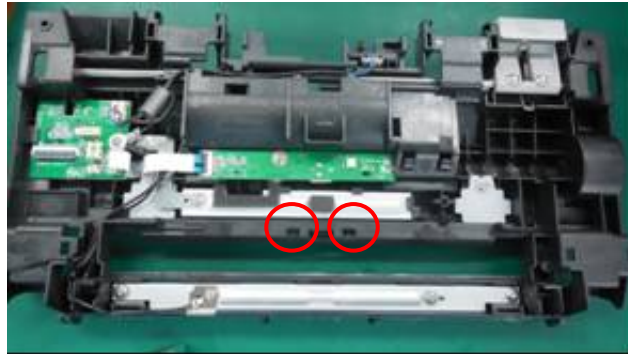
Separate 2 : Unloosen the tenon as below picture shown



Separate 3 : Unscrew(Cross*2) all the joints as below picture shown



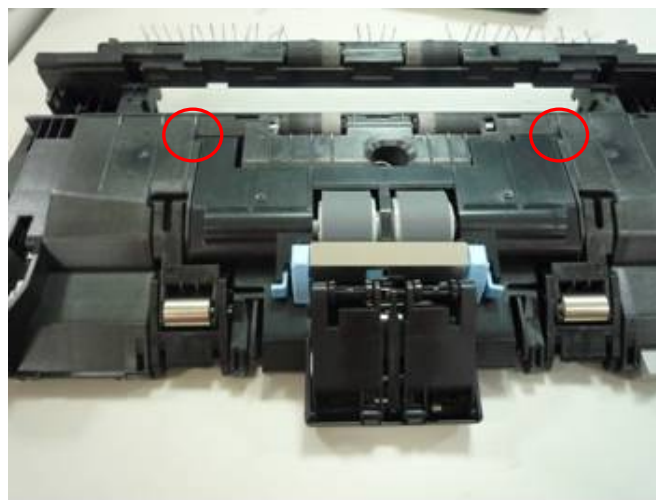
Separate 4 : Unloosen the tenon as below picture shown



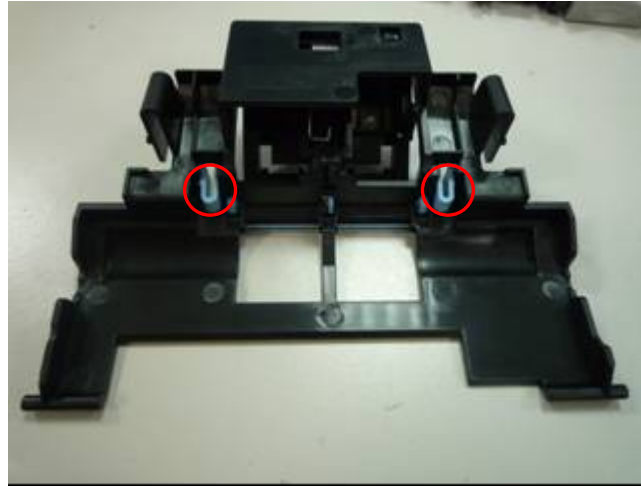
Separate 5 : Unscrew(Cross*2) all the joints as below picture shown



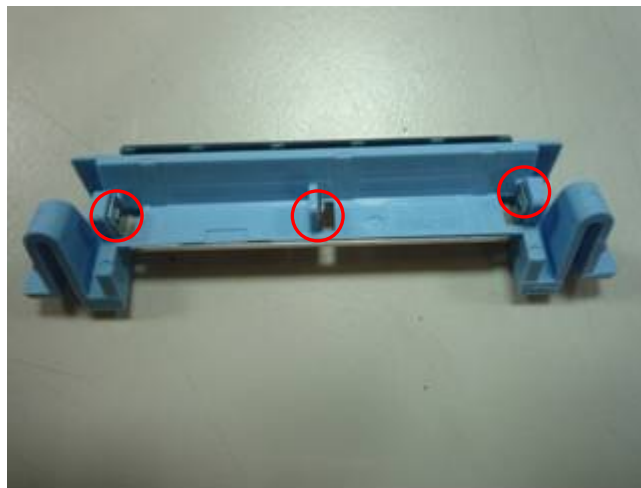
Separate 6 : Unloosen the tenon as below picture shown



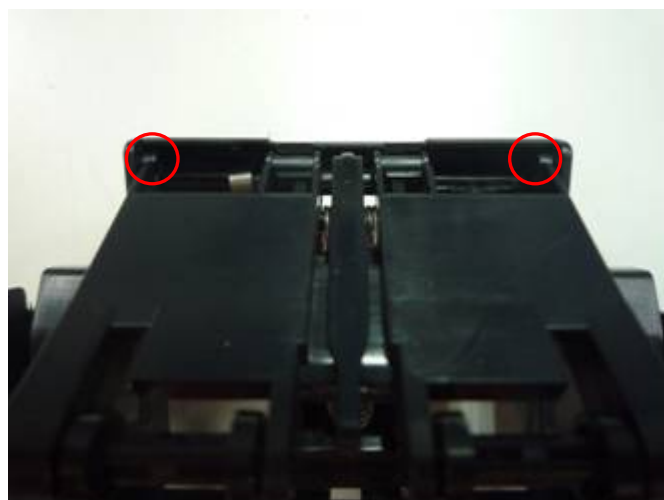
Separate 7 : Unloosen the tenon as below picture shown



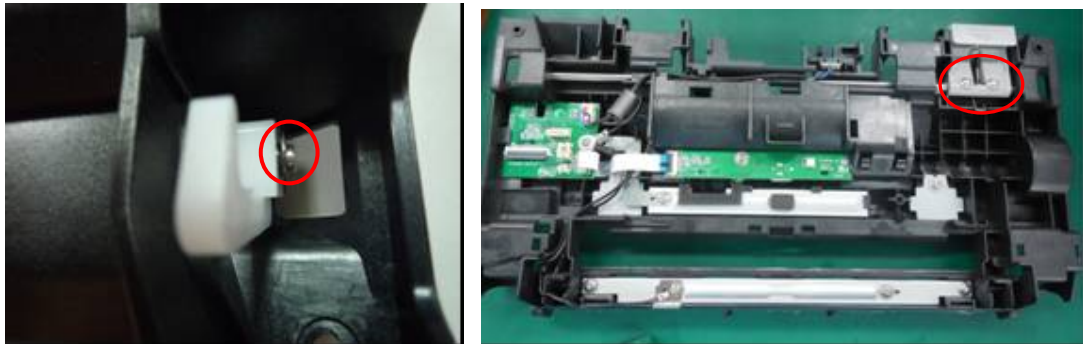
Separate 8 : Unloosen the tenon to separate plastic part and metal part



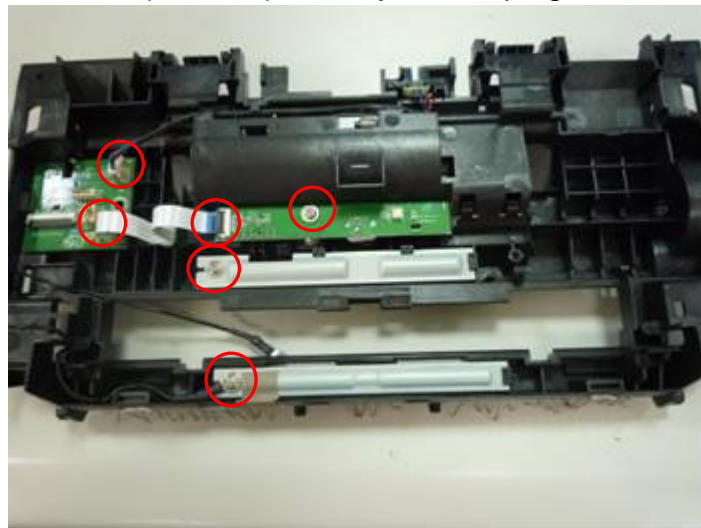
Separate 9 : Unloosen the tenon as below picture shown



Separate 10 : Unloosen the tenon and then unscrew(Cross*2) all the joints as below pictures shown



Separate 11 : Unscrew(Cross*3) all the joints/Unplug tenon to move parts

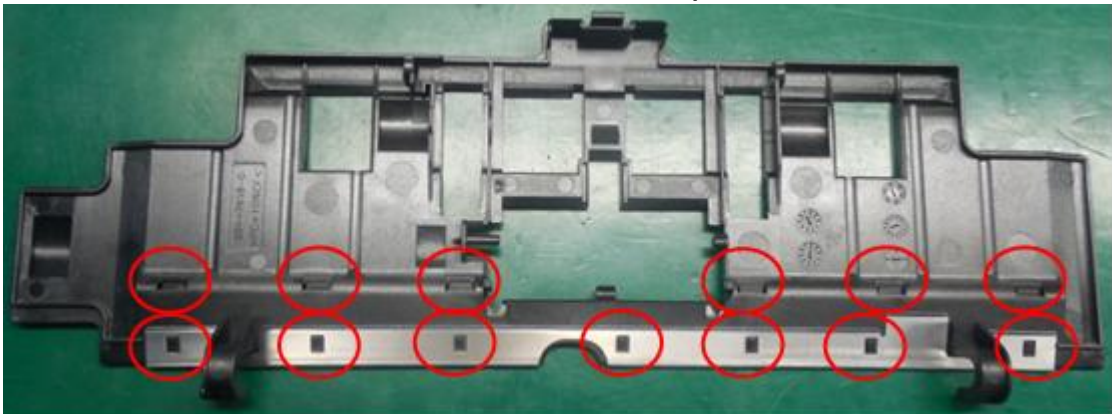


Main Body – Bottom Base Ass’y

Separate 1 : Unloosen the tenon as below pictures shown



Separate 2 : Unloosen the tenon as below picture shown



Separate 3 : Unloosen the tenon to move the Roller as below picture shown



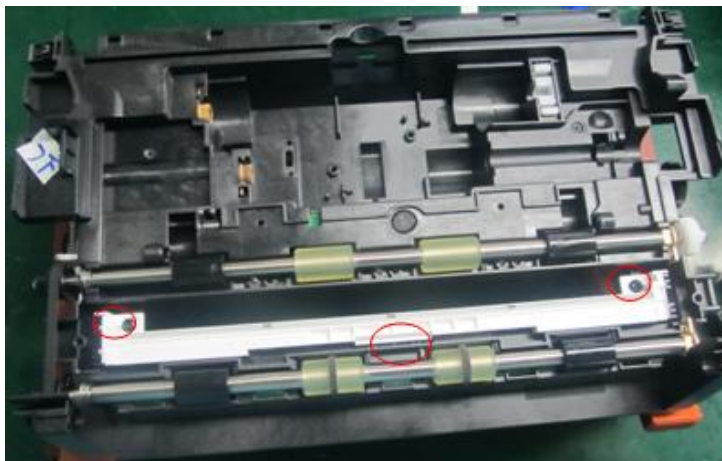
Separate 4 : Unscrew(Cross*4) all the joints as the picture show



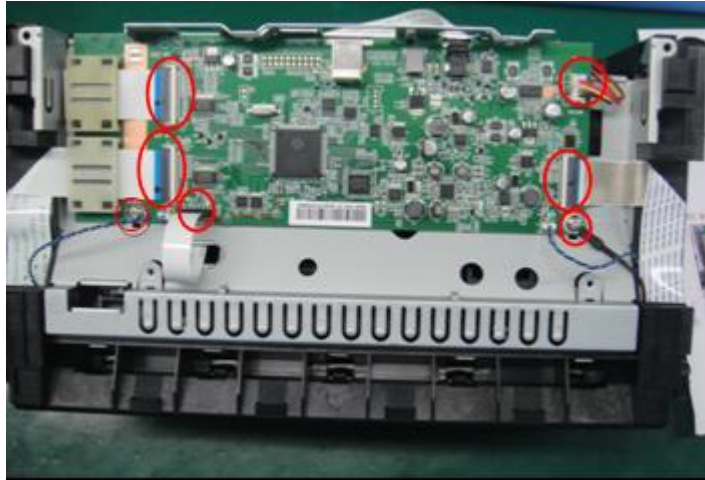
Separate 5 : Unloosen the tenon to move the Roller as below picture shown



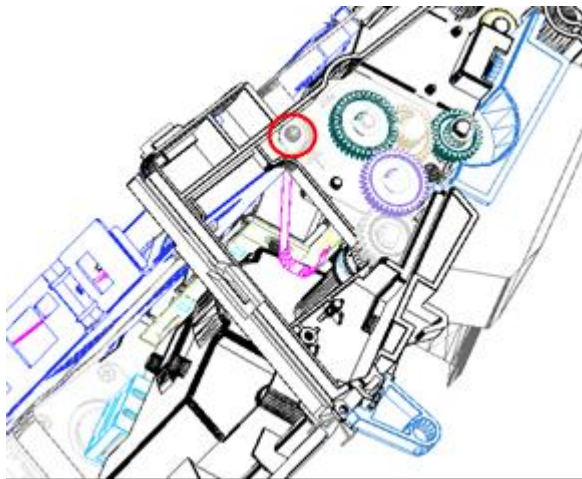
Separate 6 : Unscrew(Cross*2) all the joint and unloosen the tenon to move LED light bar



Separate 7 : Unscrew(Cross*2) and unplug all the joints as below picture shown



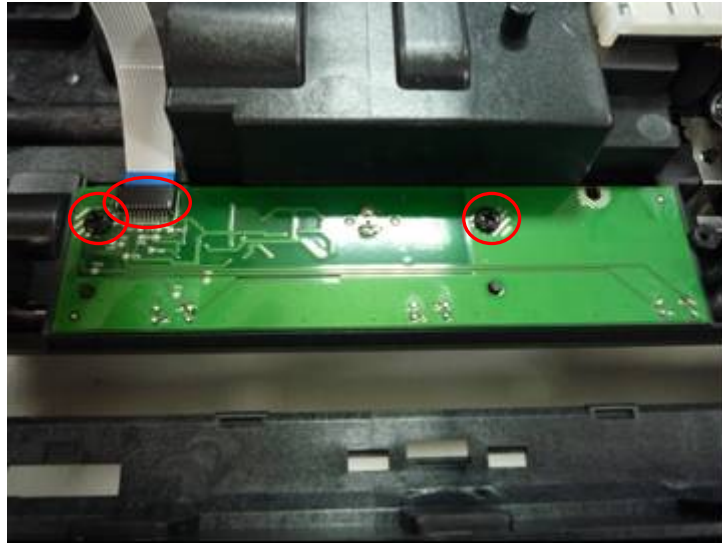
Separate 8 : Unscrew(Cross*1) and unloosen the tenon to move the Metal Case



Separate 9 : Unscrew(Cross*1) to take out the Optical Assembly



Separate 10: Unscrew(Cross*2) and unplug all the joint as below picture shown



Separate 11 : Unscrew(Cross*2) to take out the MOTOR



Optical Assembly

Separate 1 : Unscrew(Cross*2) all the joints as the picture show



Separate 2 : Unscrew(Cross*2) all the joints as below picture shown



Separate 3 : Unloosen the tenon as below picture shown

