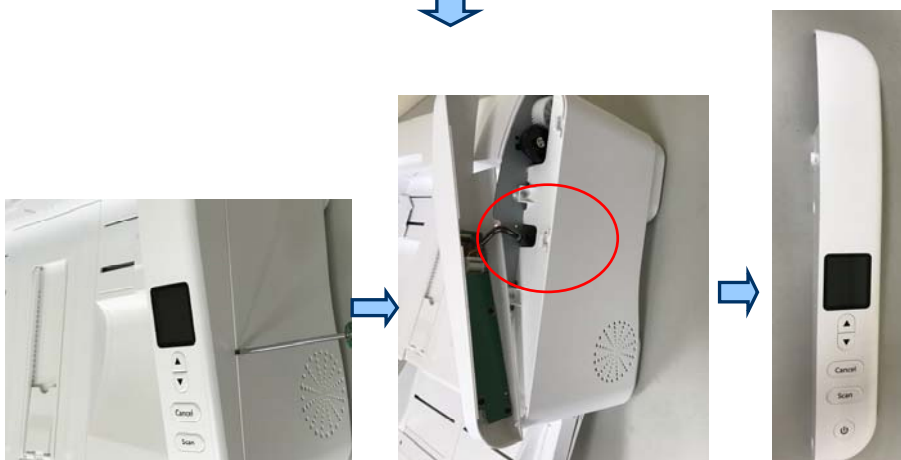


### 3. Dismantling Process

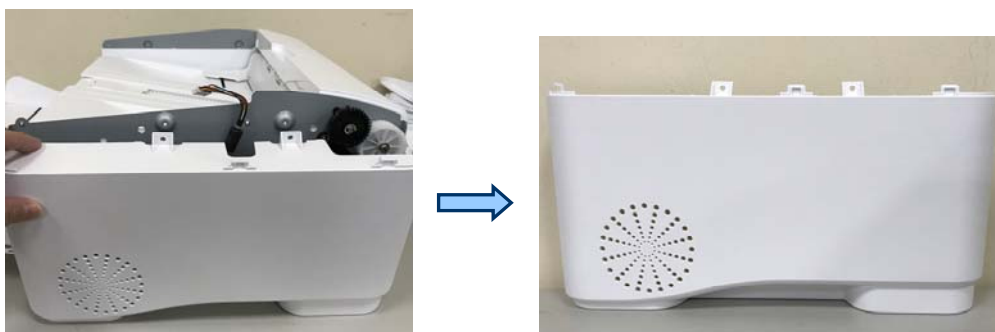
**Step 1: Remove the mylar and use screwdriver unloosen the tenon , unplug the cable to take out UI Panel Cover**



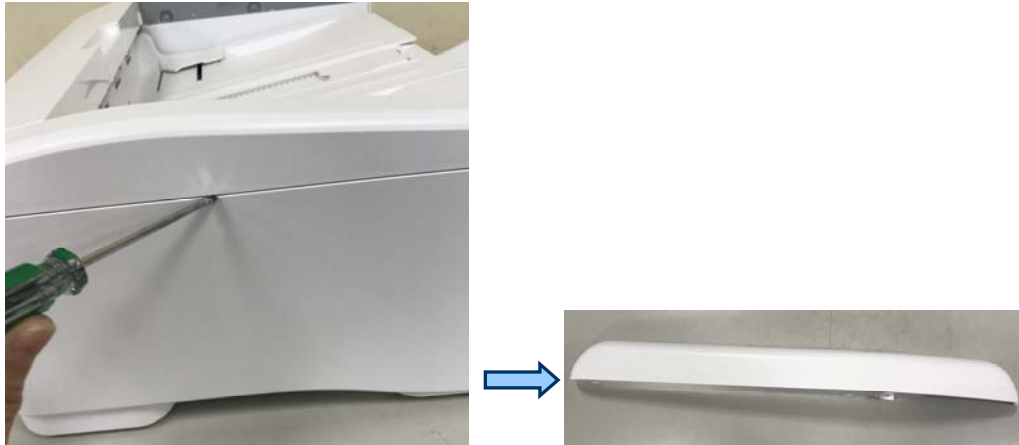
**Step 2: Use screwdriver to loosen the tenon and unplug the cables to take out PCBA(UIA256/004-3442-9)**



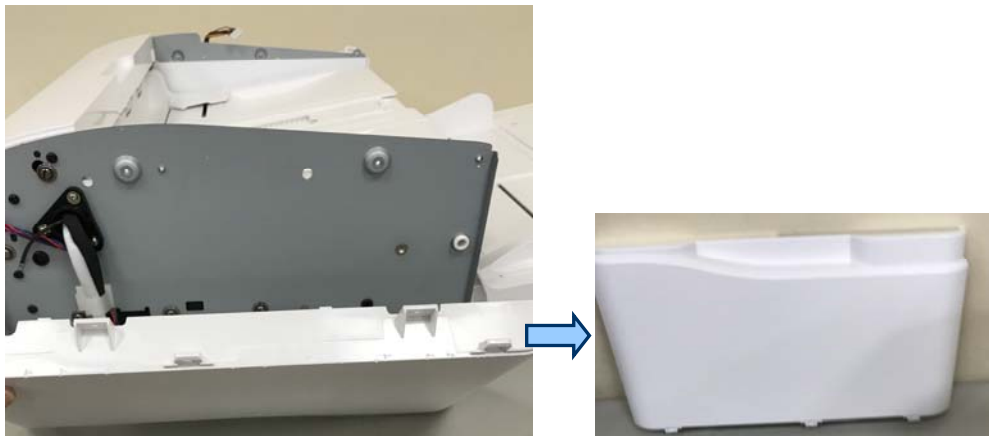
**Step 3: Use screwdriver to take out Right Adf Cover(051-A432-0)**



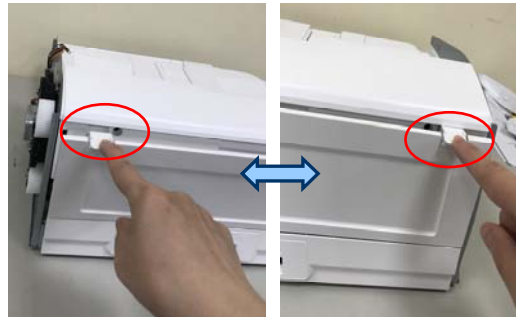
**Step 4: Unloosen the tenon to remove the Top Left Cover**



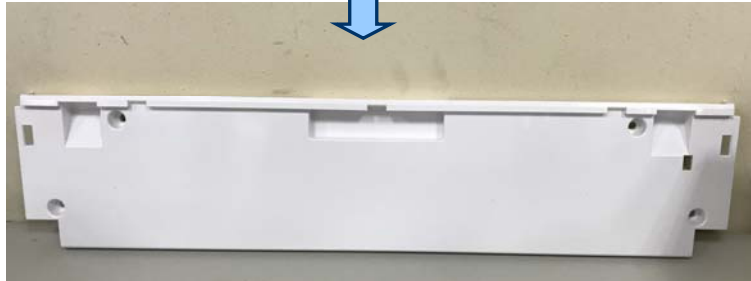
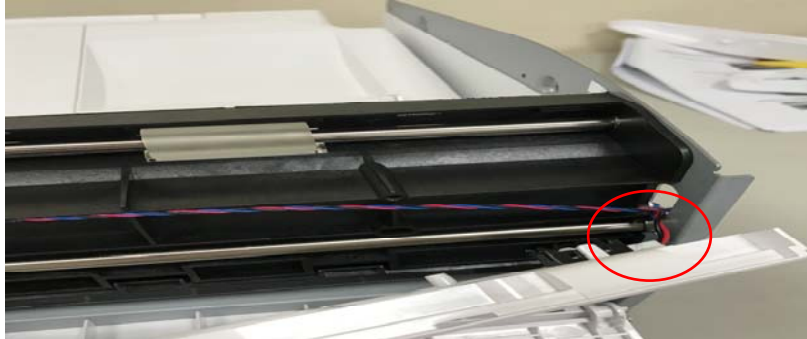
**Step 5: Use screwdriver to take out Left Adf Cover(051-A431-0)**



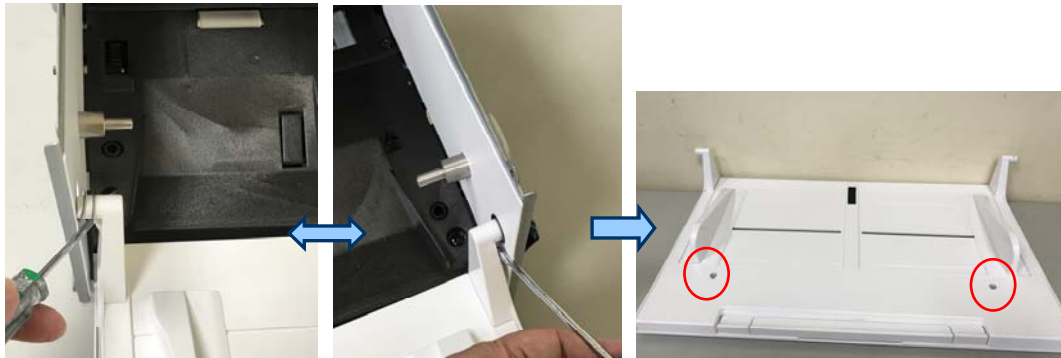
**Step 6: Push the lock and open the cover , Use screwdriver to take out Top Adf Cover(051-A435-0)**



**Step 7: Unplug the cable and unloosen the tenon to take out Back Adf Cover (051-A438-0)**



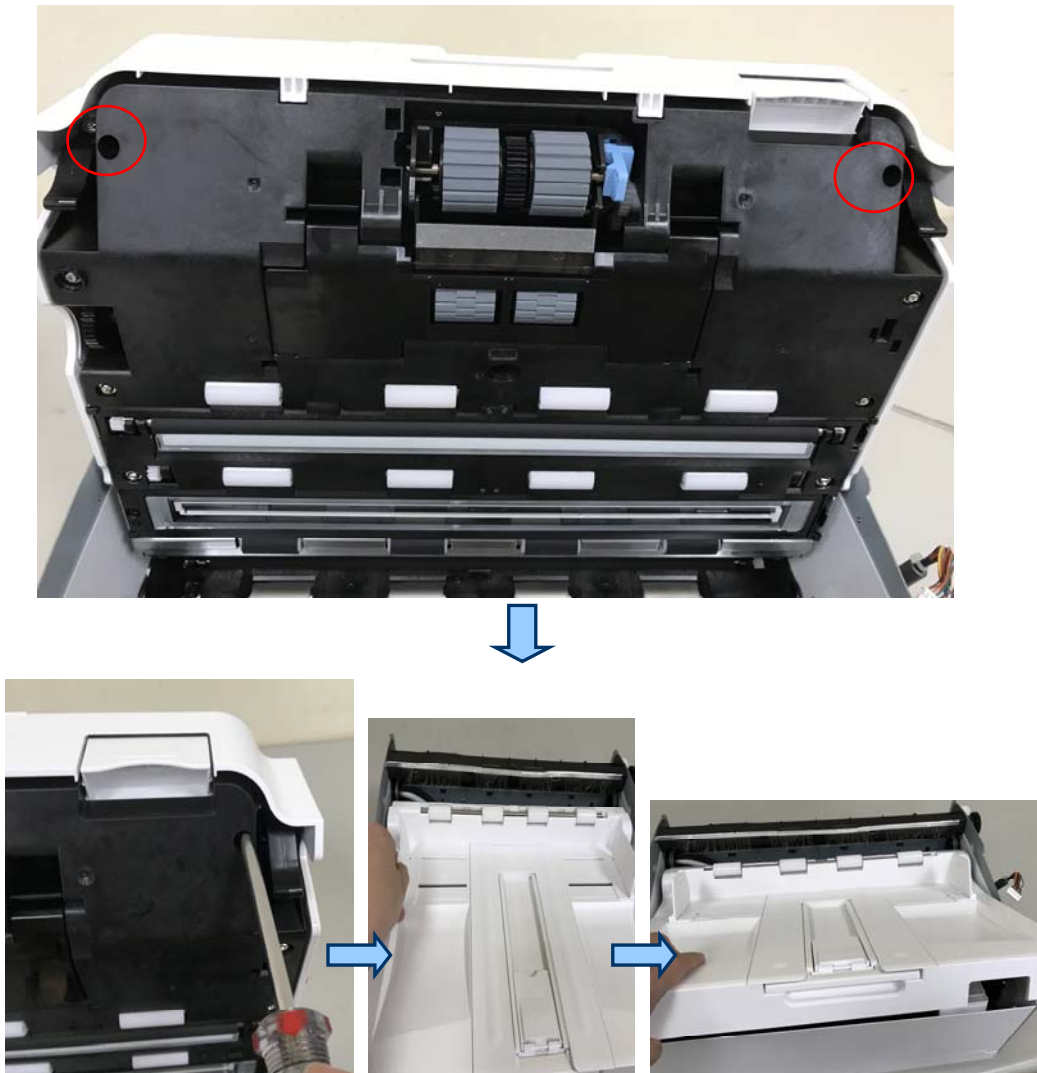
**Step 8: Use screwdriver unloosen the tenon to take out Input Tray Ass'y**  
**Use screwdriver to remove Input Tray Ass'y and take out Input Down Tray(051-A441-0),Extend Input Middle Tray(051-A178-0)**



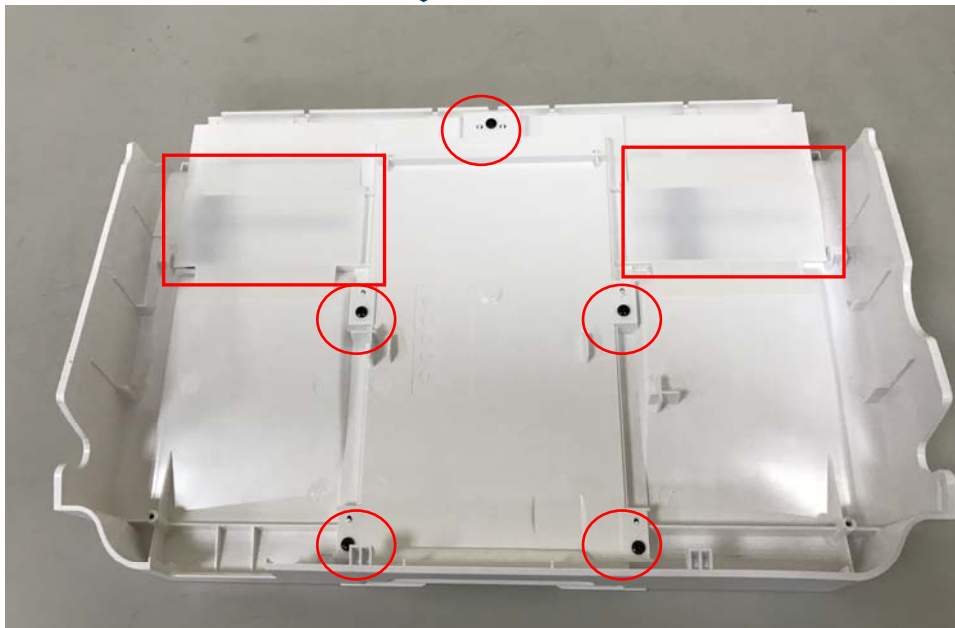
**Step 9 : Use screwdriver to remove Input Up Tray (051-A178-0)**

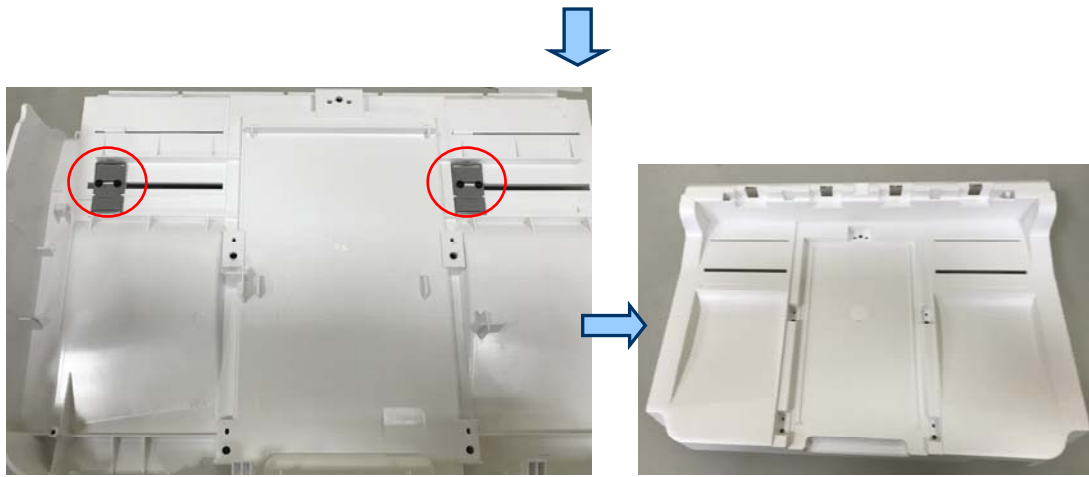


**Step 10: Use screwdriver unloosen the tenon to take out Output Tray Ass'y**

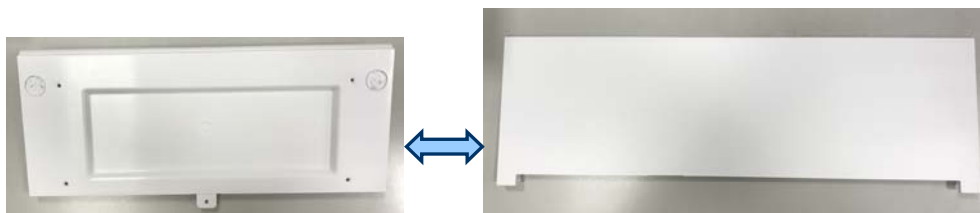
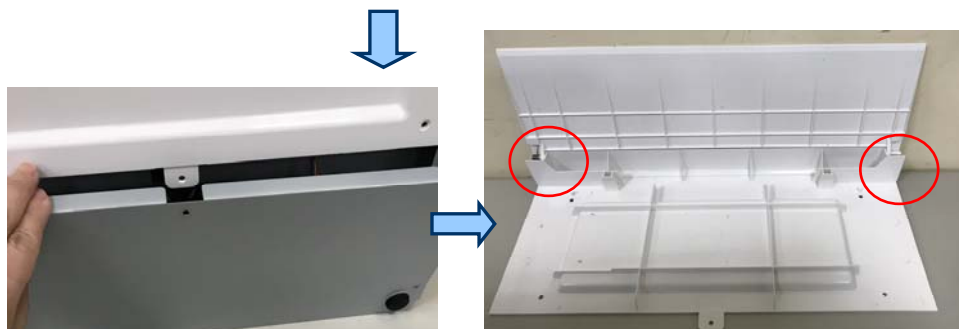
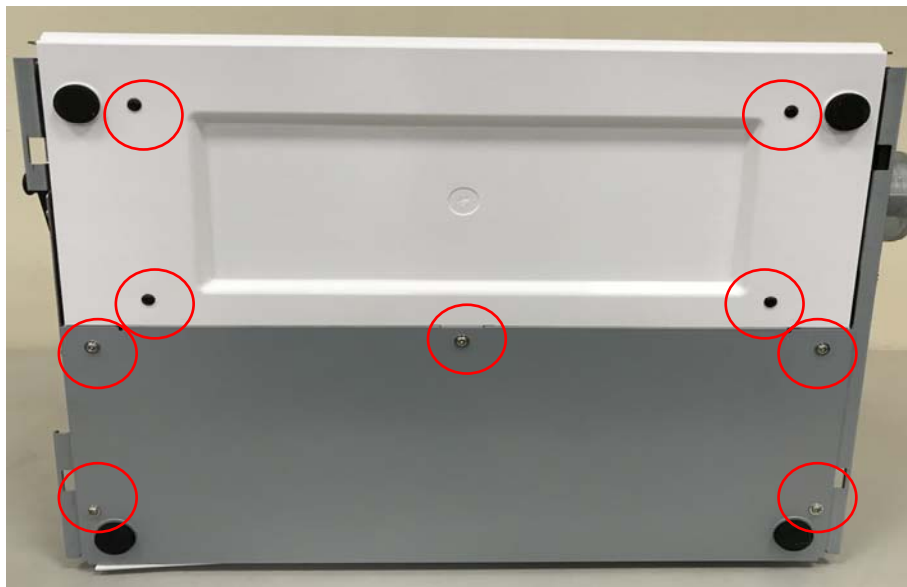


**Step 11: Use screwdriver unloosen the tenon to take out Output Tray Ass'y.  
Take out Roller and Remove the Mylar, Use screwdriver to take Out Output  
Main Tray(051-A447-0)**

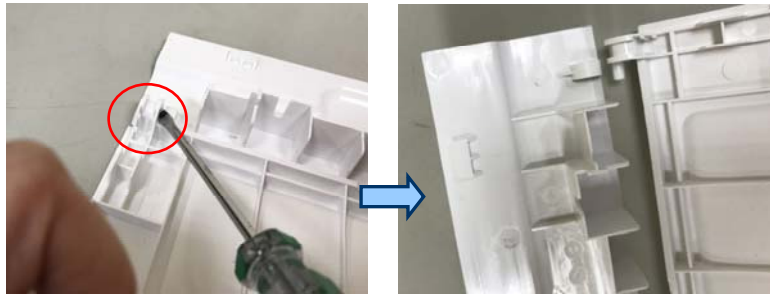




**Step 12: Use screwdriver and unloosen the tenon to remove Mount, remove the spring to take out Bottom Cover(051-A433-0) and Front Cover(051-A437-0)**

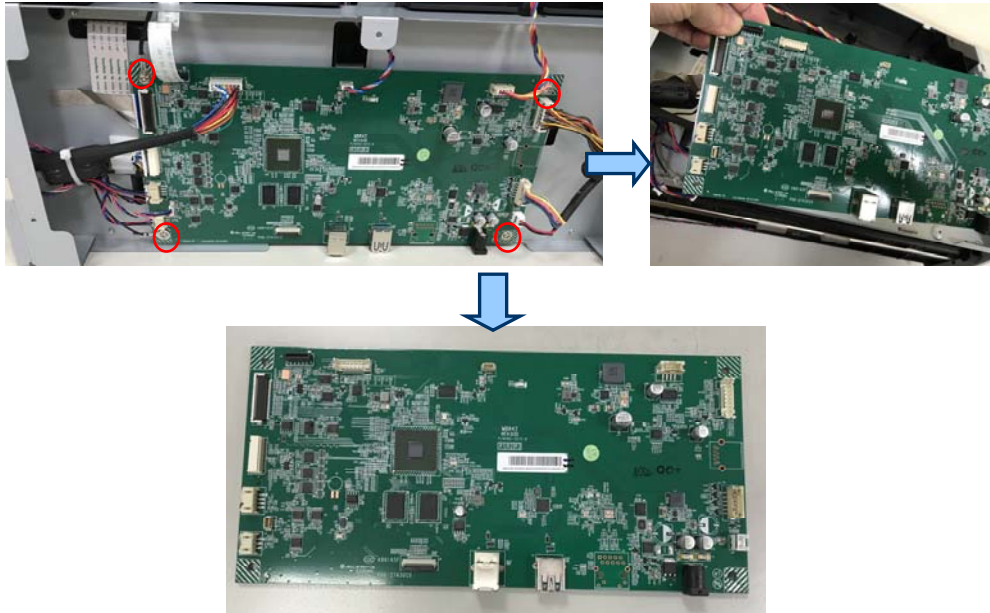


**Step 13: Use screwdriver and unloosen the tenon to take out Output Back Tray(051-A439-0)**

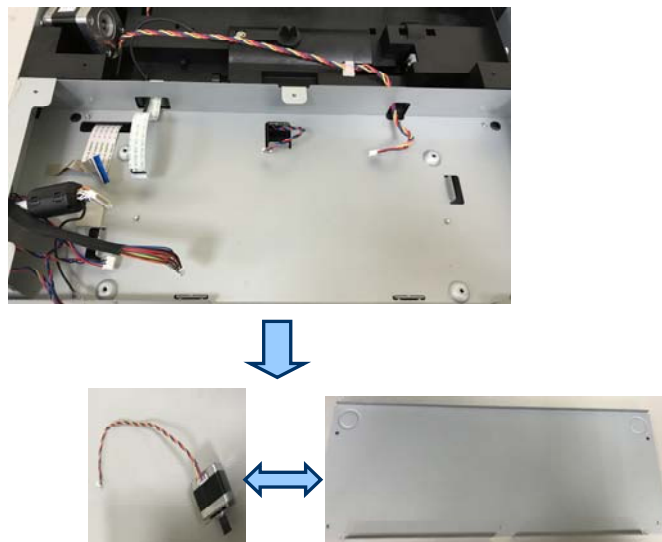


## Base Ass'y

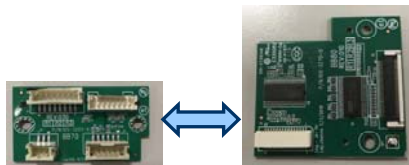
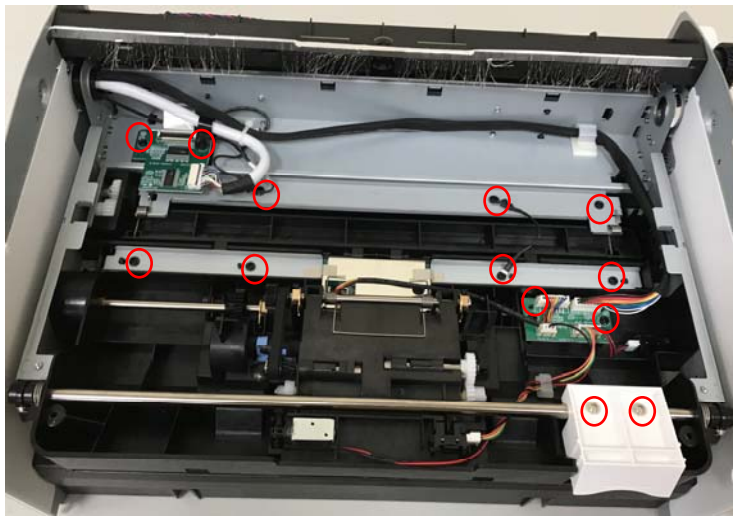
**Step 1: Use screwdriver to remove PCBA (MBA909/004-3525-9)**



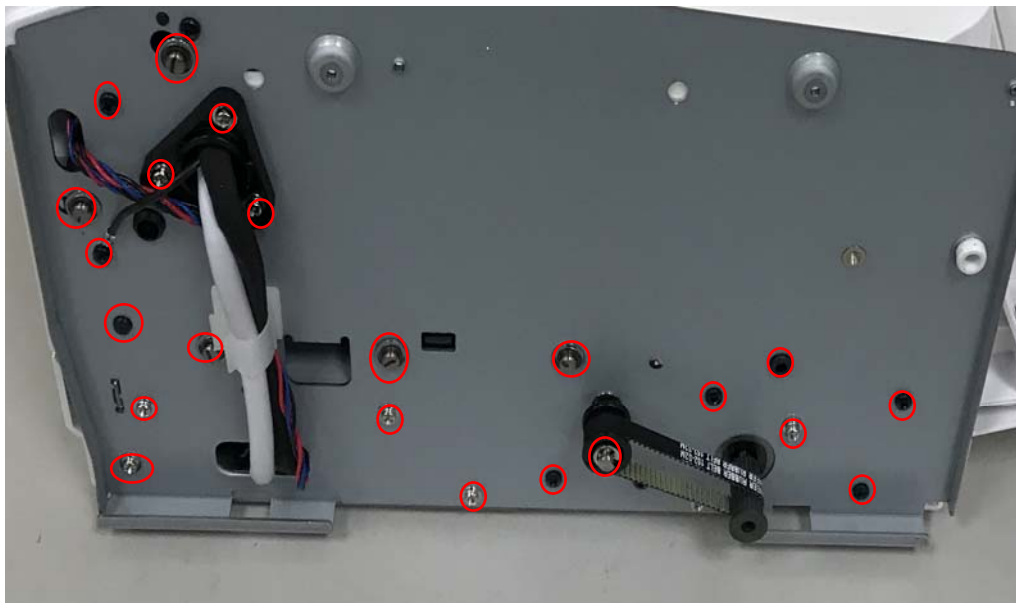
**Step 2: Remove the Mount and Motor**

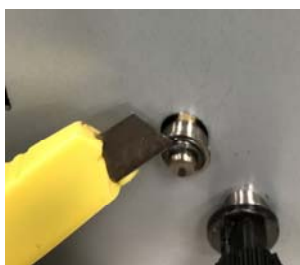
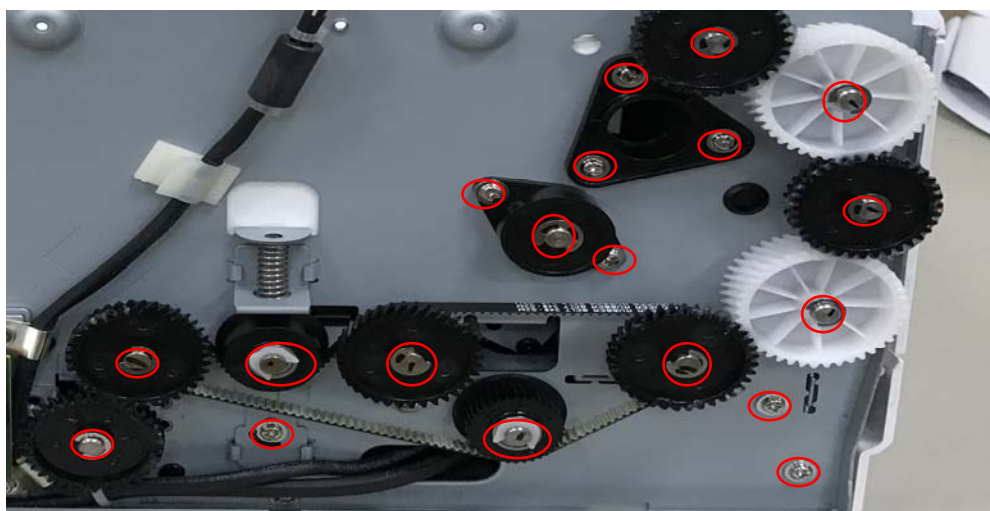


**Step 3: Use screwdriver to remove PCBA (BBA70/004-3203-9) and PCBA(BBA80/004-3270-9)**



**Step 4: Use screwdriver remove the spring and cut Belt to remove the Gear**



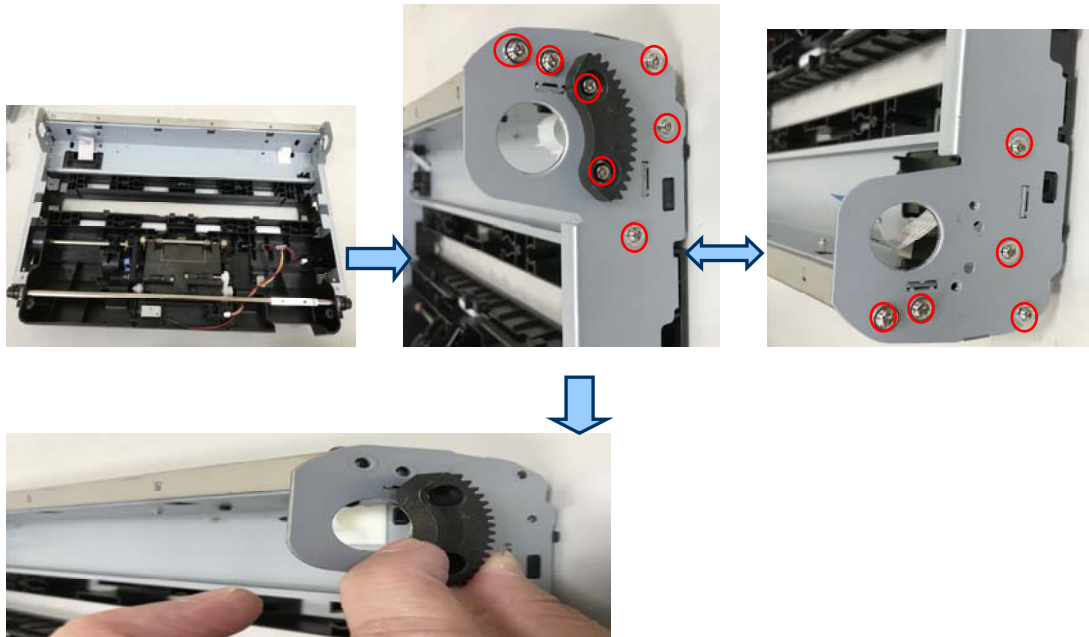


**Step 5: Use screwdriver to remove PCBA(SBA277/004-3201-9)**

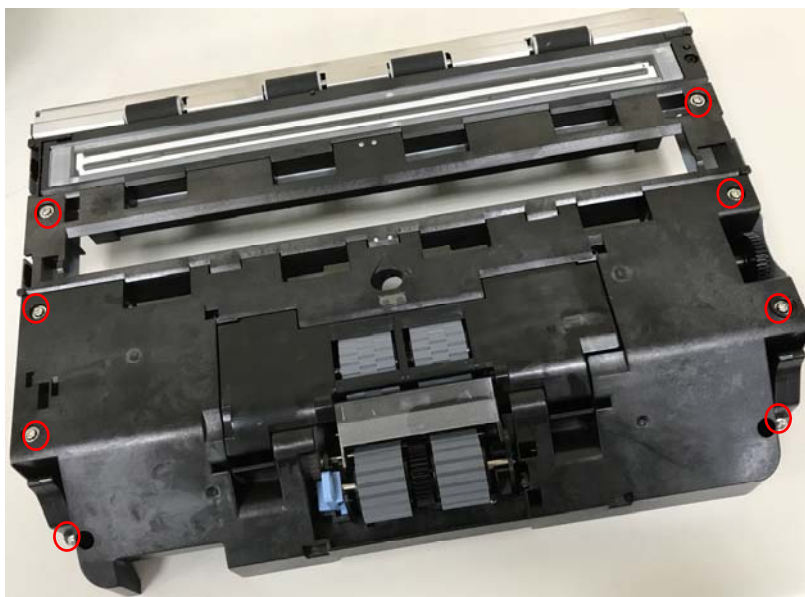




**Step 6: Use screwdriver to remove Mount**

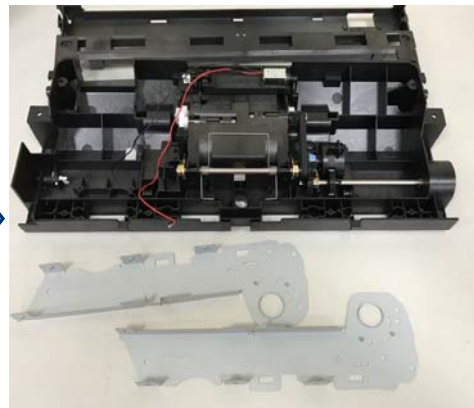
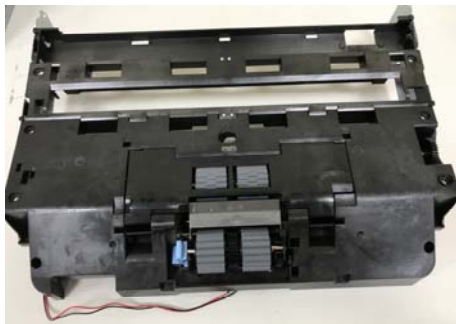


**Step 7: Use screwdriver to take out the Holer**

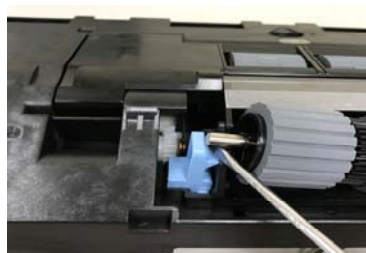




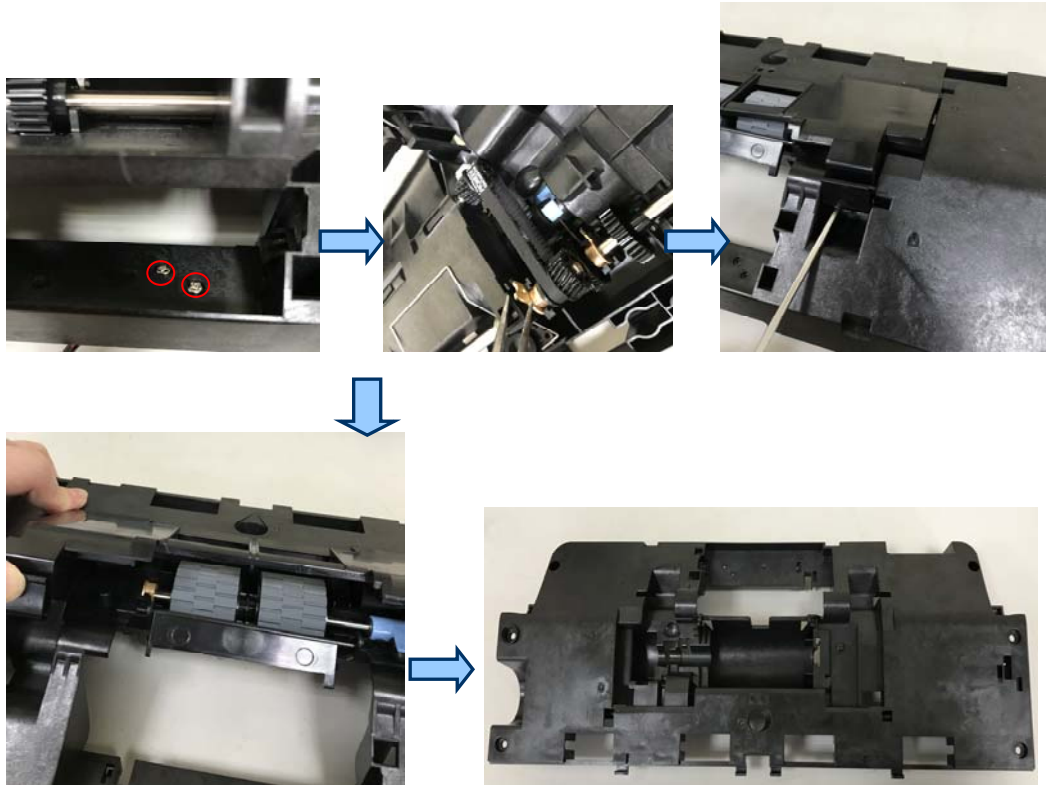
**Step 8: Remove the Mount. to take out Glass Upper Holder(051-A110-01)**



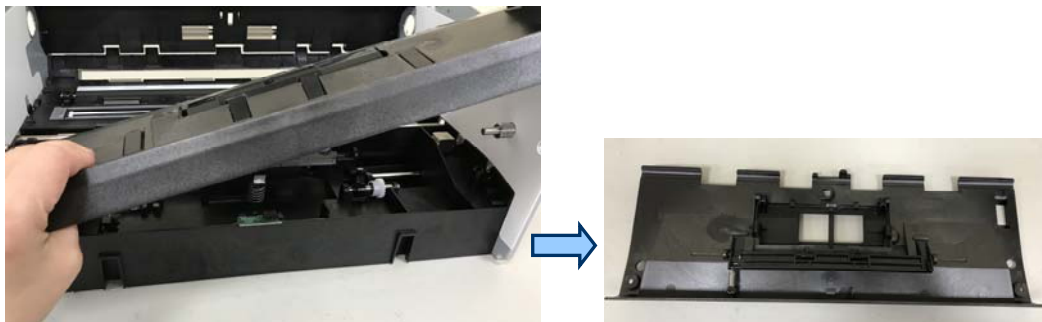
**Step 9: Use screwdriver to remove Rollers**



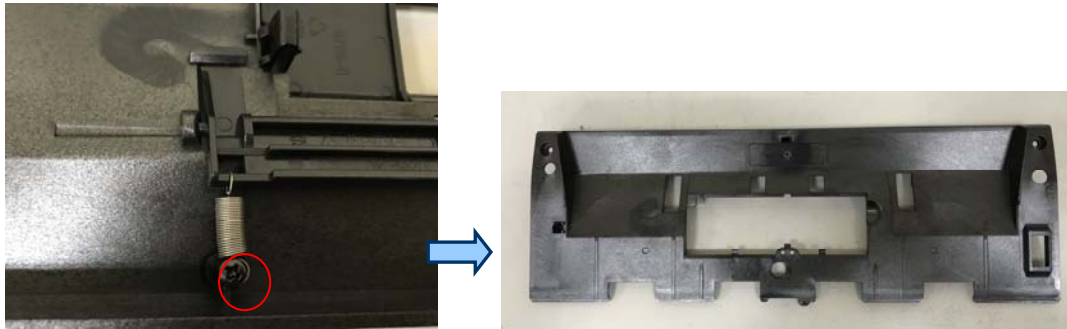
**Step 10: Use screwdriver to remove Plates and Rollers to take out Upper Case(051-9682-0)**



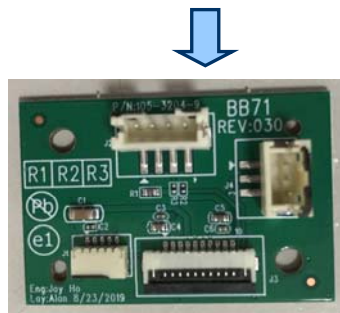
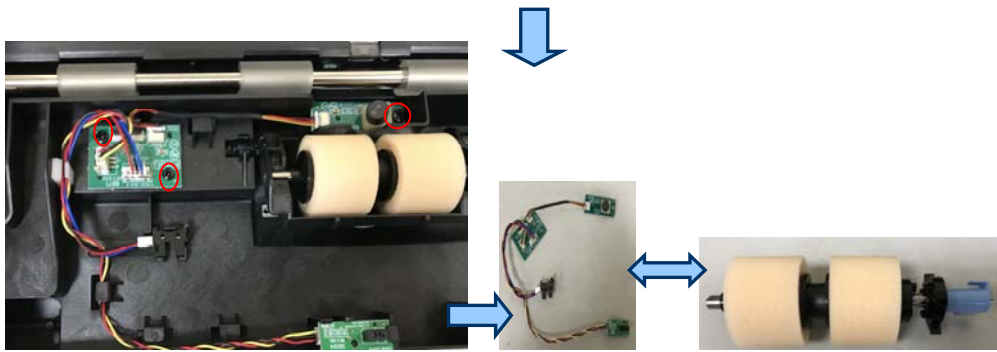
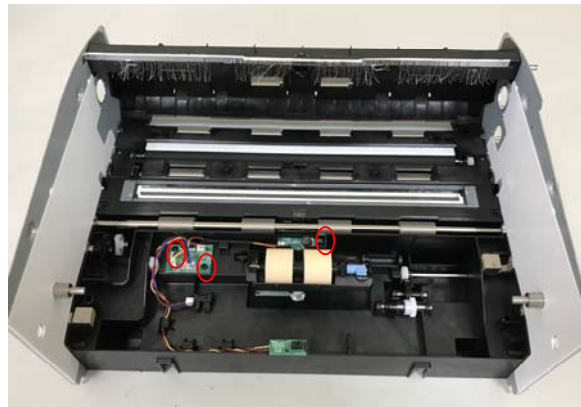
**Step 11: Remove the Paper Path In Case Ass'y**



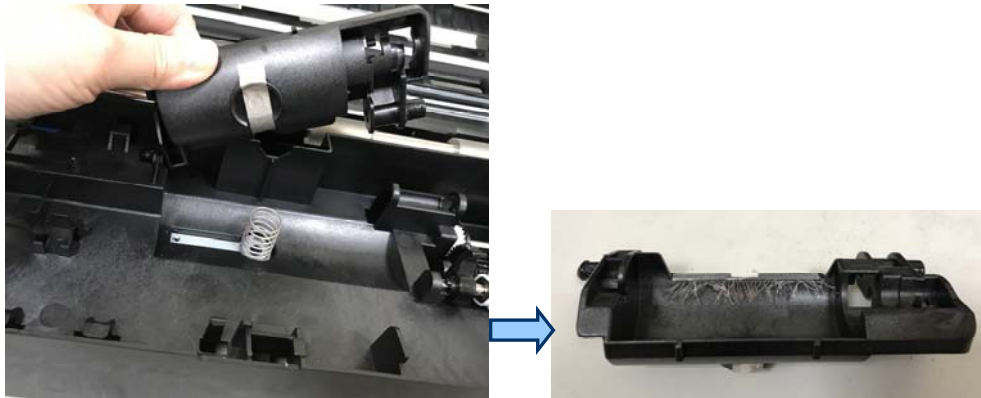
**Step 12: Use screwdriver to remove Spring to take out Paper Path In Case (051-9686-0)**



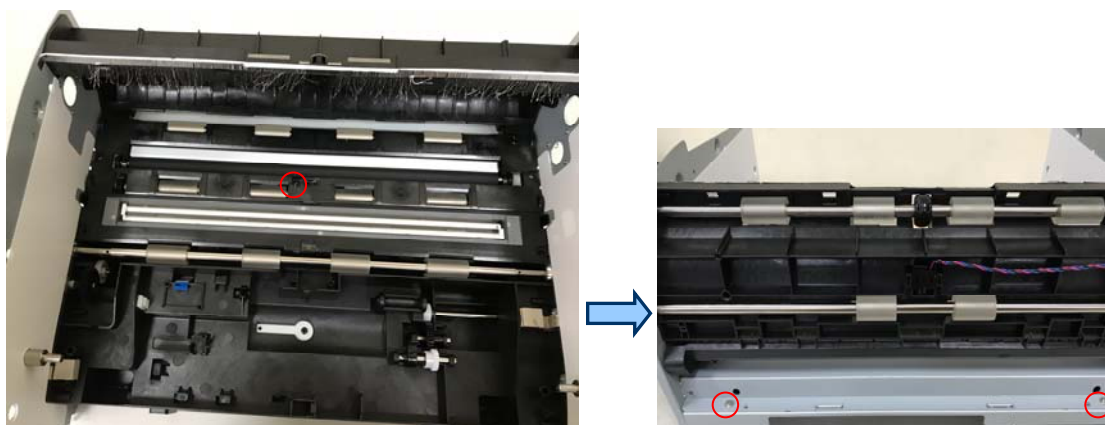
**Step 13: Use screwdriver Unloosen the tenon unplug the cable to take out Rollers and PCBA(BBA71/004-3204-9)**



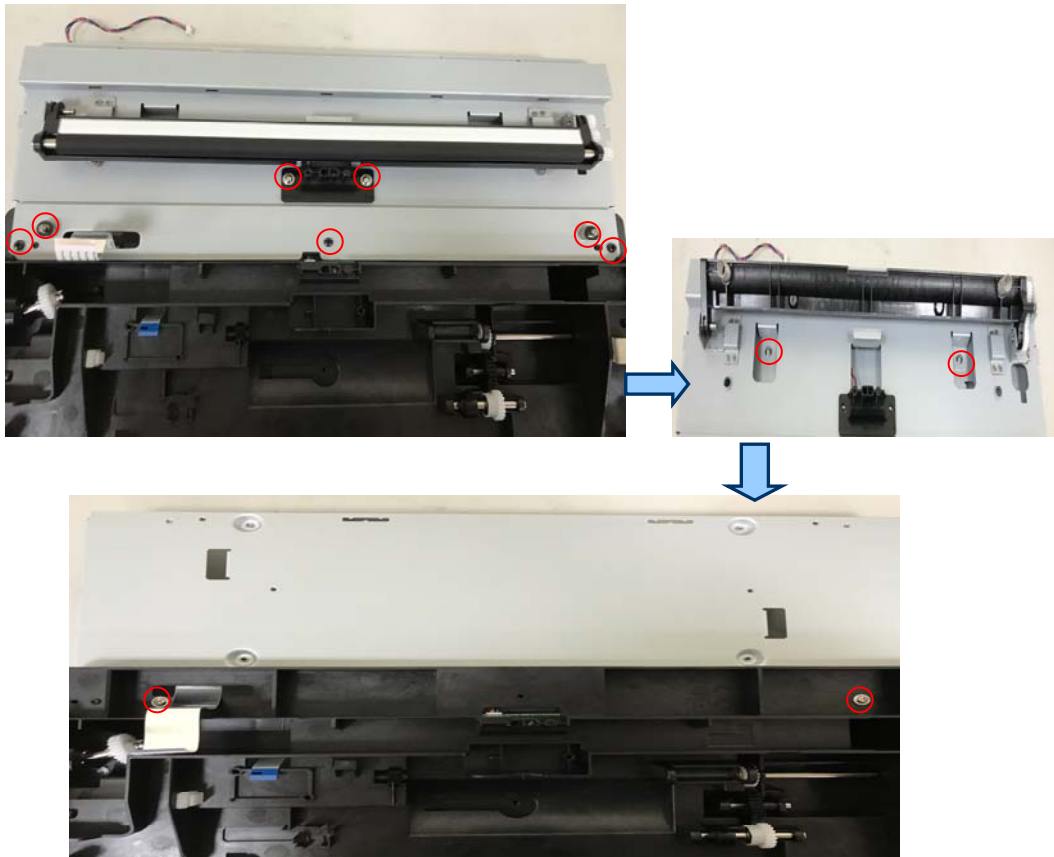
**Step 14: Unloosen the tenon to remove the Case**



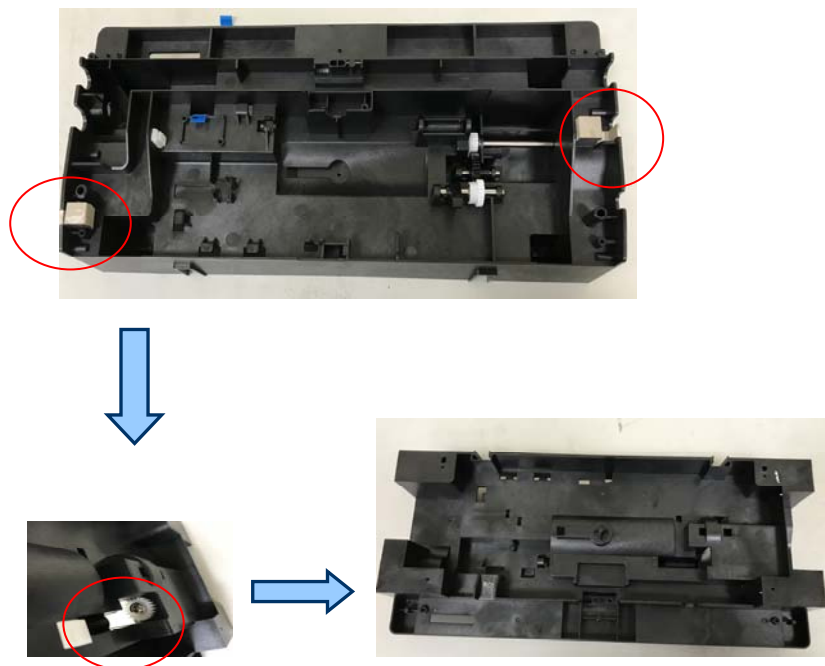
**Step 15: Use screwdriver to remove Rollers to take out Upper Path Guide (051-9735-0)**



**Step 16: Lower Case Ass'y Use screwdriver to take out Mount.**



**Step 17: Use screwdriver Unloosen the tenon to remove Gear and sponge  
To take out Lower Case(051-9683-01)**



## CIS Module

**Step 1: Unloosen the tenon and take out Aluminum foil, Mylar.**



**Step 2: Unloosen the tenon to remove LED, Holder and CIS PCBA.**

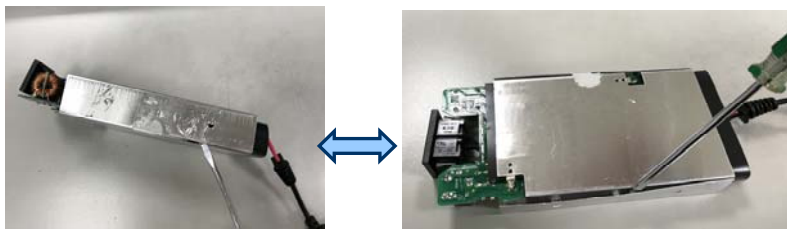


## Power Adapter (external power supply)

**Step 1: Use screwdriver to remove Upper Cover and Bottom Cover.**



**Step 2: Use screwdriver / unloosen the tenon to metal plate.**



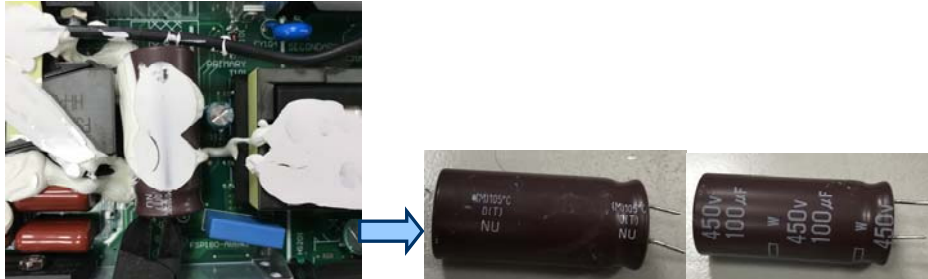
**Step 3: Cut down the metal plate. to take out PCBA**







**Step 4: Cut down the cable.**



**Step 5: Cut down the Capacitor.**



## 4. Disassembly Tool

<p>(1)</p> 	<p>(2)</p> 
<p><b>Screwdriver</b></p>	<p><b>Screwdriver</b></p>
<p>(3)</p> 	<p>(4)</p> 
<p><b>Blade</b></p>	<p><b>Pliers</b></p>