

3. Dismantling Process

Step 1: Use the screwdriver to take out Input Tray Ass'y.



Step 2: Use the screwdriver to take out Output Tray Ass'y.



Step 3: Use the screwdriver to take out Cover Top.



Step 4: Pry out the Rubber Stands with a flat screw driver.



Step 5: Use the screwdriver to remove Cover Rear.



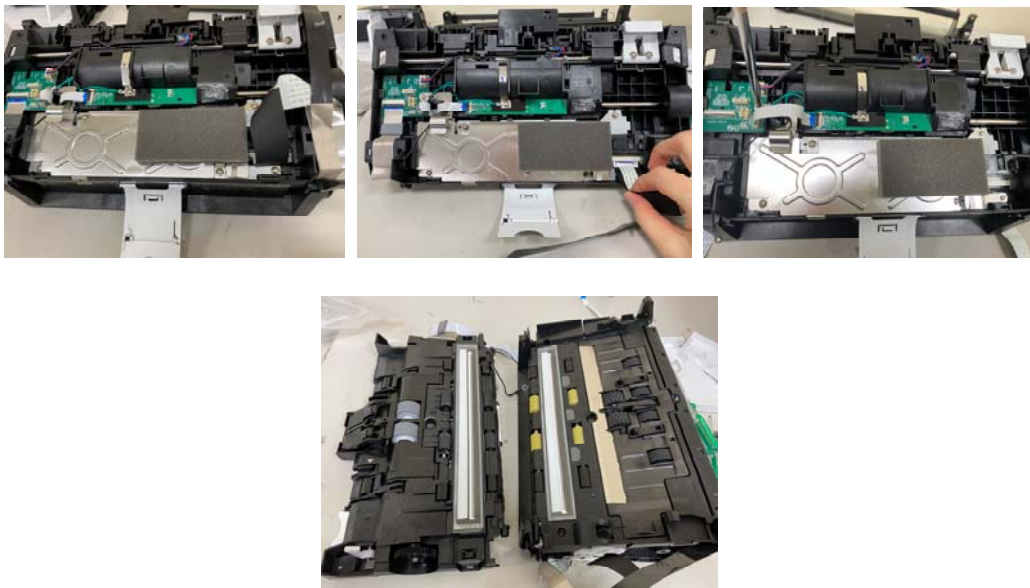
Step 6: Open the Front Cover and unloosen the tenon to remove Cover R/L.



Step 7: Use the screwdriver, unloosen the tenon to separate Upper Cover Ass'y.



Step 8: Unloosen the tenon ,unplug the cables and use the screwdriver to separate Upper Base Ass'y and Bottom Base Ass'y.



Lower Base Ass'y

Step 1: Use screwdriver to take out PCBA Cover



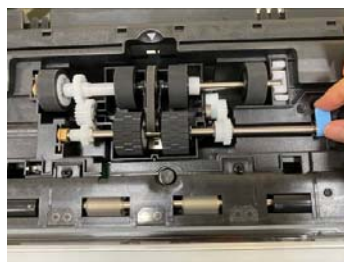
Step 2: Use the screwdriver and Unplug the cable to remove PCBA(MBA892/004-3481-9)



Step 3: Open the Paper Guide, and then unloosen the tenon to take out Paper Guide



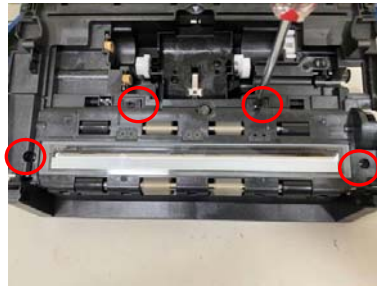
Step 4: Open the blue Clamp to take out Pick up Roller/ADF Roller



Step 5: Unloosen the tenon to take out Rubber Rollers, Shafts, E-rings and Gears.



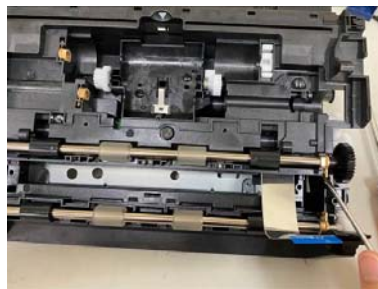
Step 6: Unscrew the joint to remove CIS Module.



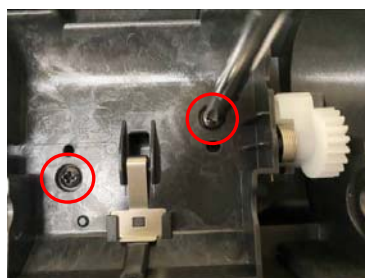
Step 7: Unscrew the joint to remove CIS Module.



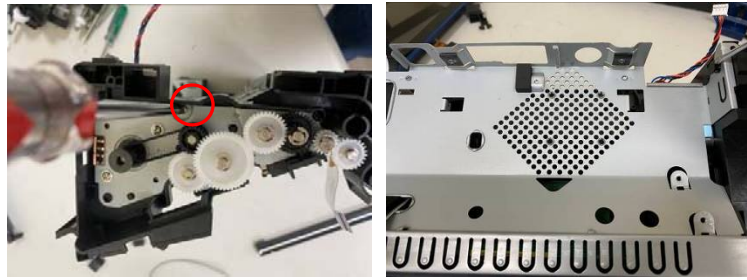
Step 8: Take out the Roller.



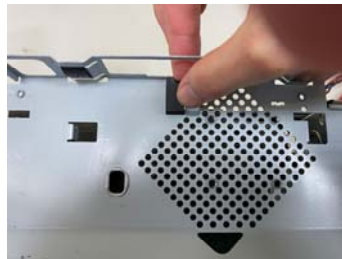
Step 9: Unscrew the joint to remove ADF Pickup Holder.



Step 10: Unscrew the joint and insert a flat screw to pry open the Bushing and then take out Mount



Step 11: Take out the PAD



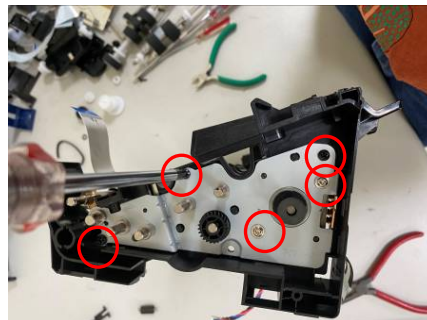
Step 12: Remove E-Ring to loosen gear.



Step 13: Cut the Belt.



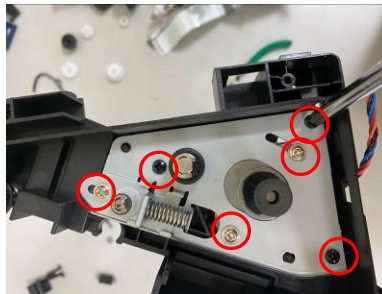
Step 14: Use a screwdriver to take out Motor and Mount.



Step 15: Cut the Belt



Step 16: Use a screwdriver to take out Motor and Mount.



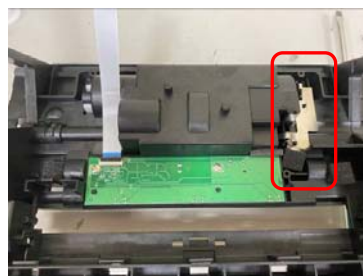
Step 17: Use a screwdriver to take out Support.



Step 18: Unloosen the tenon to take out Bush.



Step 19: Take out Sponge & Plate.

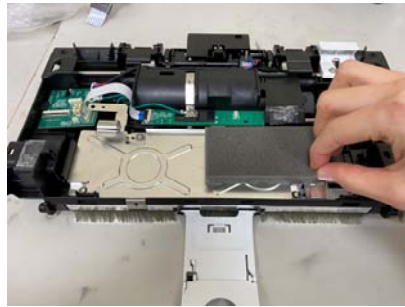


Step 20: Use a screwdriver to take out PCBA(SBA304/004-3467-9) & Lower Case(051-8811-01).



Upper Base Ass'y

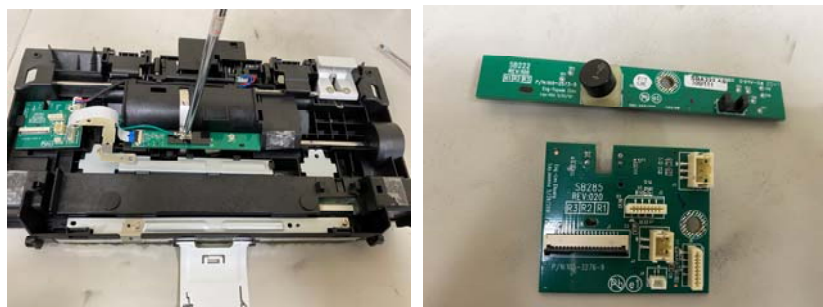
Step 1: Tear off the Sponge.



Step 2: Use the screwdriver to remove CIS Plate.



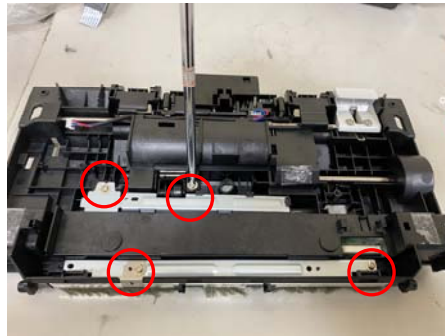
Step 3: Use the screwdriver to remove PCBA(SBA285/004-3276-9)&(SBA303/004-3466-9)



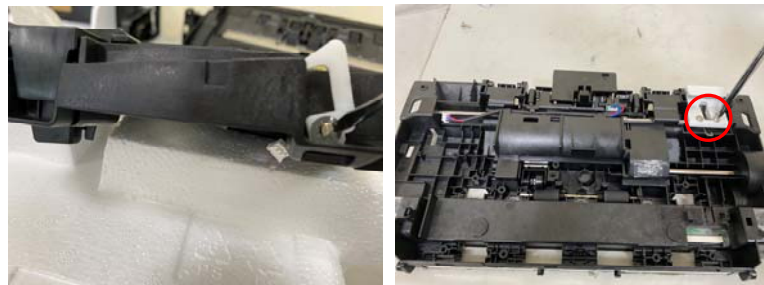
Step 4: Take out Middle Holder Output



Step 5: Use the screwdriver to remove Plate.



Step 6: Use the screwdriver to remove Shaft, Latch, Hook and Spring.



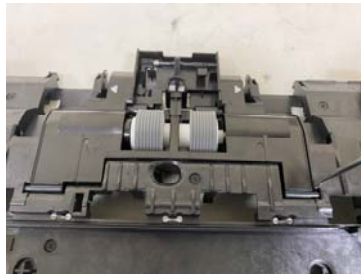
Step 7: Unloosen the tenon to take out CIS Ass'y.



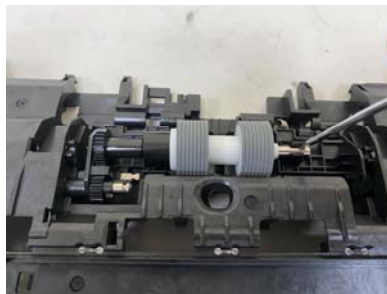
Step 8: Unloosen the tenon to take out Holder.



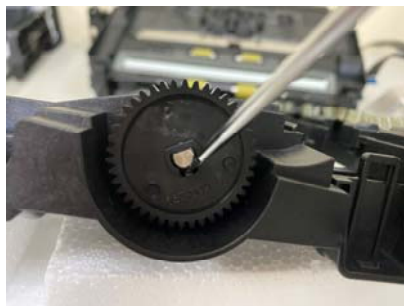
Step 9: Unloosen the tenon to take out Paper Roller Cover.



Step 10: Unloosen the tenon to take out Roller.



Step 11: Unloosen the tenon to remove Roller.

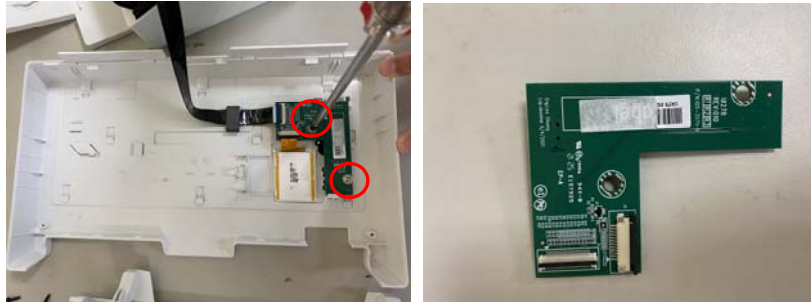


Step 12: Unloosen the tenon to remove Holder and Upper Case(051-9554-01)



Upper Cover Ass'y

Step 1: Use the screwdriver and disconnect the cable to take out PCBA(U1A279/004-3593-9).



Step 2: Take out the Cover Panel to remove Upper Cover(051-A709-0) and LCD Module.



Input Tray Ass'y

Step 1: Tear off the Nameplate



Step 2: loosen the tenon to remove Input Tray Cover(051-A469-01) & Input Tray Case(051-A478-0)



Output Tray Ass'y

Step 1: loosen the tenon to remove Tray Bottom, Output Tray and Output Tray Button



Step 2: loosen the tenon to remove Others.



Step 3: Take out Holder.



CIS Module

Step 1: Cut the Tape.



Step 2: Use the screwdriver to remove CIS Holder



Step 3: Take out the Tape.



Step 4: Unloosen the tenon to remove CIS PCBA.



Step 5: Unloosen the tenon to remove CIS Cover & LED.



Power Adapter

Step 1: Pry out Adapter Cover with a flat screwdriver and a hammer.



Step 2: Cut the wire.



Step 3: Use a flat screwdriver to pry out PCBA.



Step 4: remove a cap. with flat screwdriver.



4. Disassembly Tool

(1)



Screwdriver

(2)



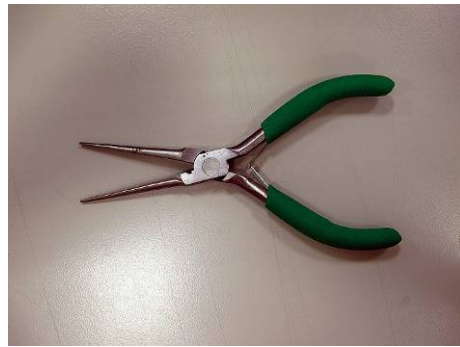
Screwdriver

(3)



Blade

(4)



Pliers