

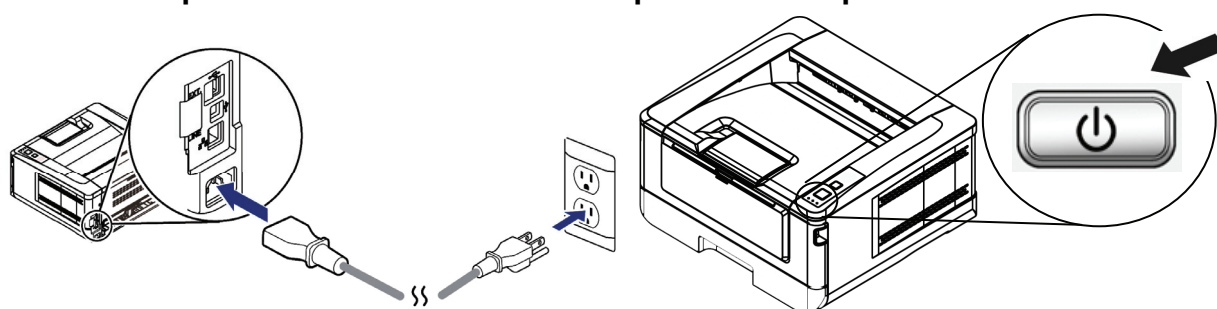


# PANDIGITAL®

Visit [www.pandigital.com](http://www.pandigital.com) for more information.  
Tech Support or Questions Please Call 1-888-909-7888

## 4. Power On

Connect power cord to wall outlet and power on the printer



## 5. Insert the CD to the computer and install the Printer Driver



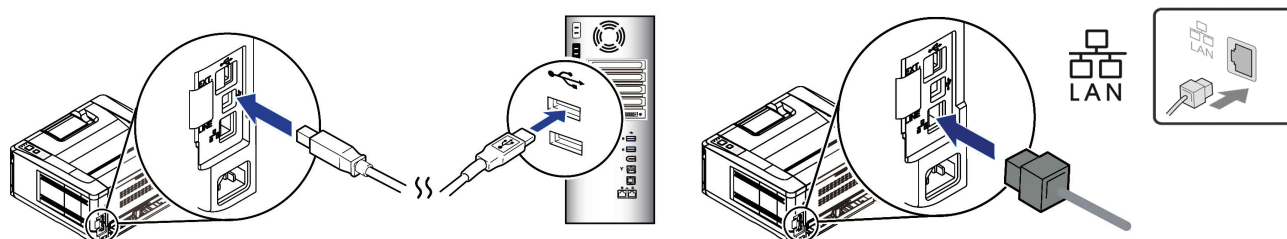
For ore information, see the user manual in the CD. If you do not have a CD-ROM, please download the driver from [www.pandigital.com/download/](http://www.pandigital.com/download/)

## 6. Connect to the Computer

Connect to USB

OR

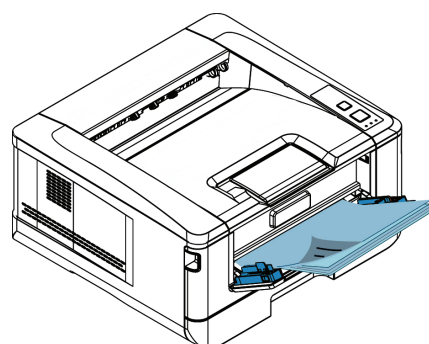
Connect to Network



### How to Print from the Manual Tray

- Pull down the Manual Tray Lever.
- Pull to slide out tray extension.
- Load paper facing down.

Ready to print.

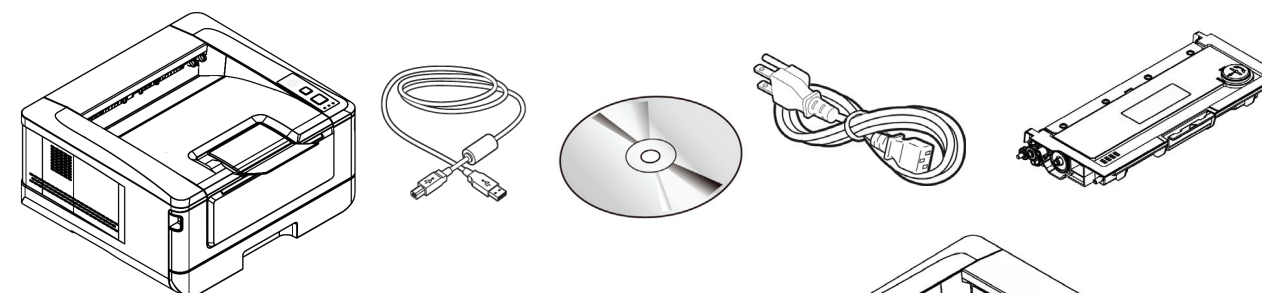


# PANDIGITAL®

## Pandigital L1 Laser Printer

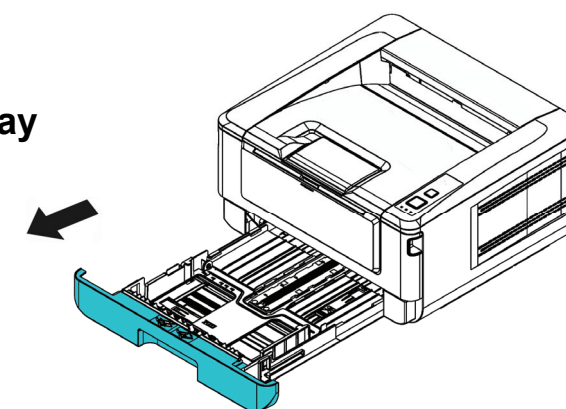
## GETTING STARTED

### 1. What's in the Box – Printer, USB Cable, CD, Quick Guide, Power Cord

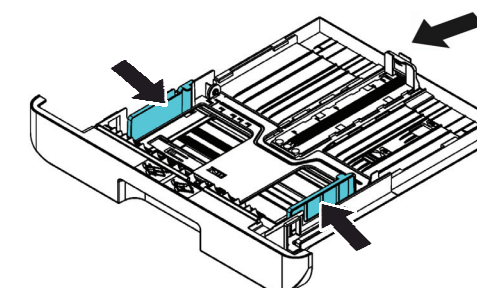


### 2. Load Paper into Main Paper Tray

Step 1. Pull out paper tray

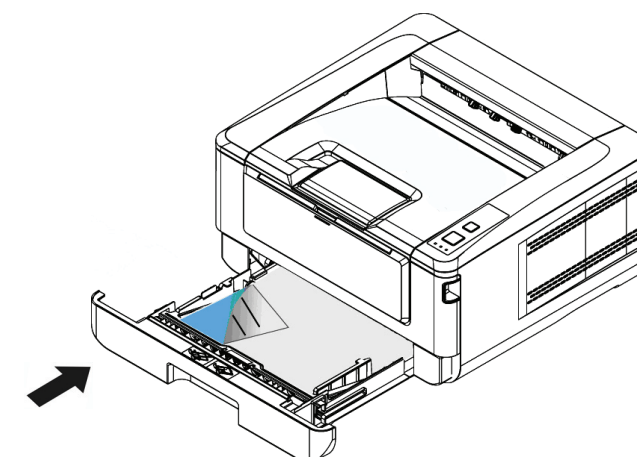


Step 2. Adjust paper tray size



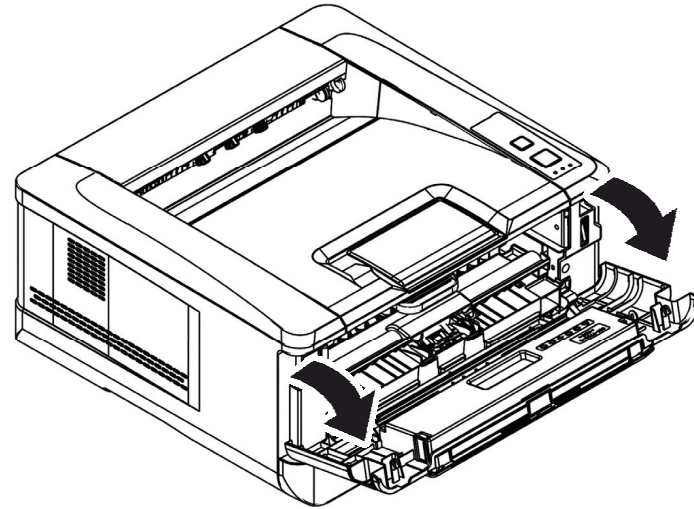
Step 3. Insert Paper to the Tray

Push to close tray door

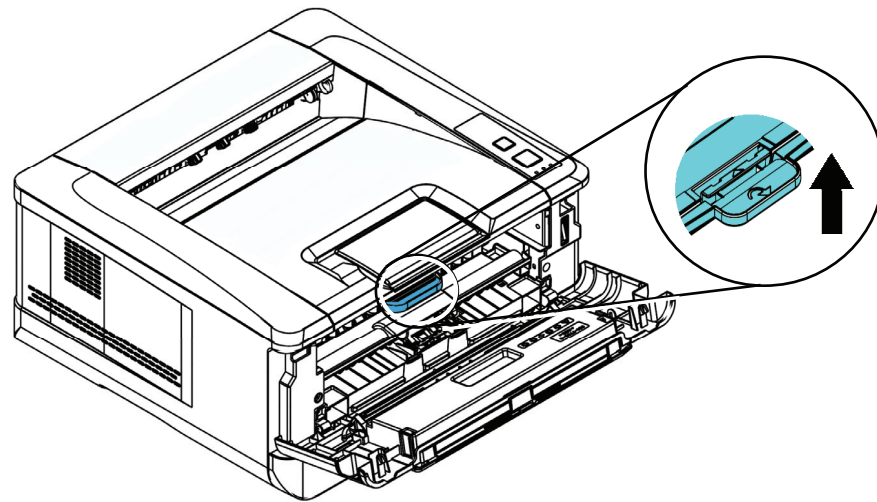


### 3. Install the Toner Cartridge

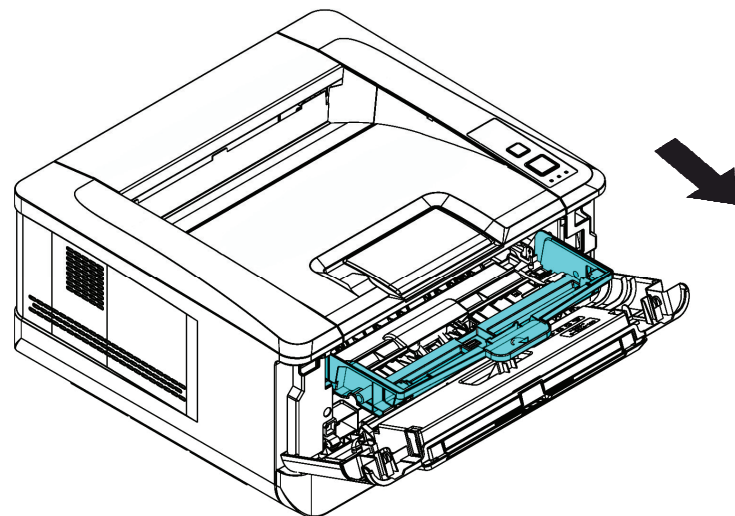
#### Step 1. Pull Down Lever



#### Step 2. Push and Lift up the drum tray.



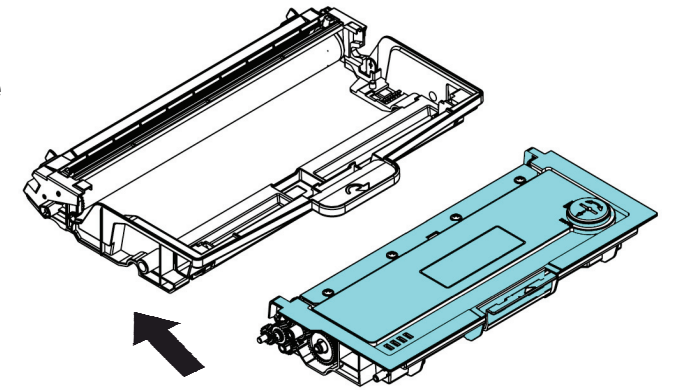
#### Step 3. Pull out the drum, and remove all the tapes on the drum.



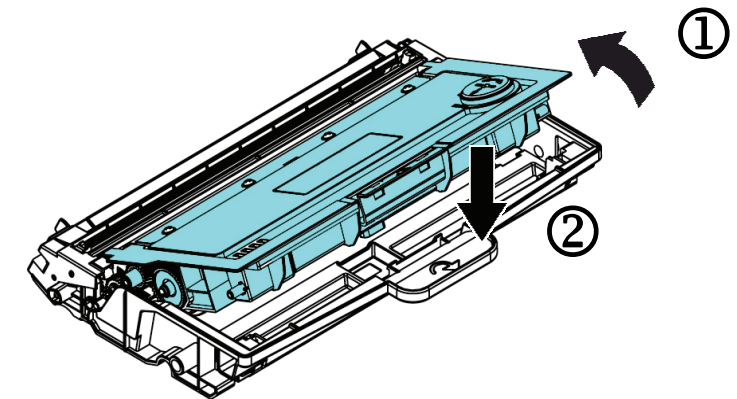
#### Step 4. Remove the toner cartridge from the plastic bag.

Remove all the tapes.

Prepare to insert the toner cartridge  
Into the drum.



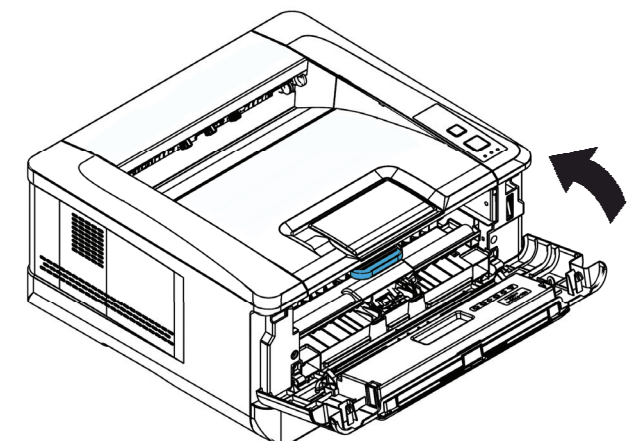
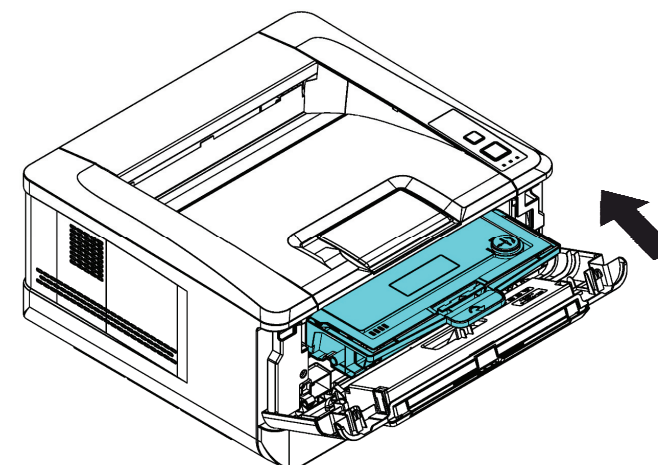
#### Step 5. Tilt the cartridge upward to slide in, push DOWN to snap in.



#### Step 6. Insert back the drum tray.

Push IN and DOWN.

Lift up on tray to close door.



251-1236-0V200